

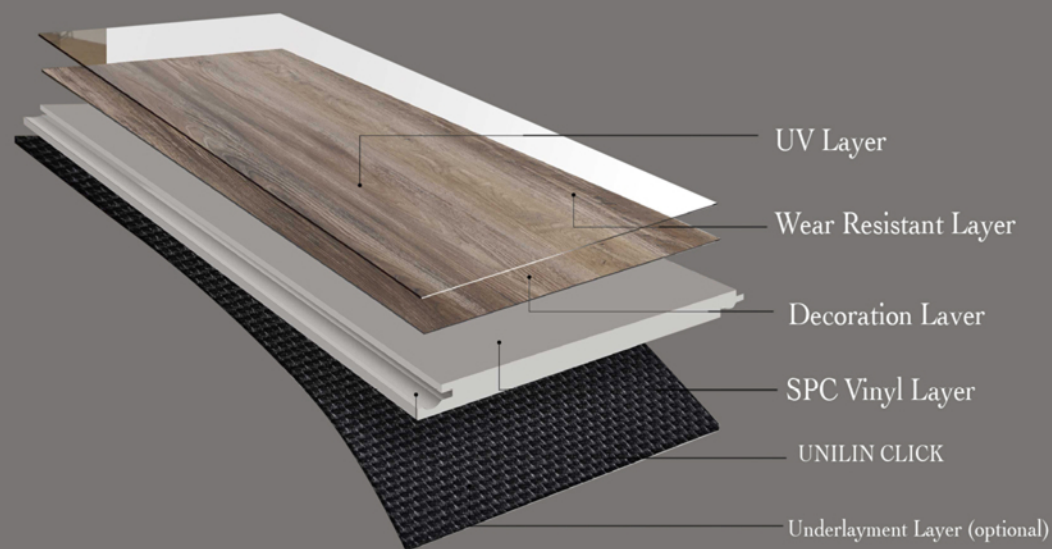


BO
FU
TU

S P C

Layers of Rigid Core Luxury Vinyl Flooring are:

1. UV coating
2. Wear Layer
3. Decore film
4. Rigid SPC core
5. Attached underlayment



What is SPC

- > SPC (Stone Plastic Composite) is an engineered luxury vinyl that combines limestone and stabilizers to create an extremely durable core. SPC flooring is up to the task in both residential and commercial settings.
- > SPC Wooden flooring is the very much popular option for floors in use today. The pattern enables a plethora of colours and grains to be displayed side by side
- > SPC flooring is very easy in installing as well. Any layment even can install the product. IT comes with unique Uniclick technology. This glueless locking technology for flooring works perfectly for both the long and short sides of the flooring panel. In addition to that, Uniclic is a locking system that is suitable for all types of materials starting from 3.2 mm.
- > SPC flooring is constructed in a way as Engineered wood that gives it greater stability and resistance to changes in temperature and humidity.
- > The Good part is that it looks like hardwood flooring because the top floor is real, but all the underneath is an SPC rigid core which makes the product more better for commercial and residential uses.

SPC core

SPC flooring contains a solid, waterproof core that won't ripple or swell no matter how much liquid you subject it to..

The core is ultra-dense with no foaming agents. You'll find it in traditional WPC flooring. It gives you slightly less softness underfoot, Although it makes the flooring extra durable and long lasting.

Advantages of SPC vinyl tiles



100% Waterproof



Termite proof



Stain Resistant



Anti slip



Quick & Easy to install



Superior scratch resistance



Fire Resistant



Easy logistics



Pet friendly



Recyclable



Ecological



Reduce noise



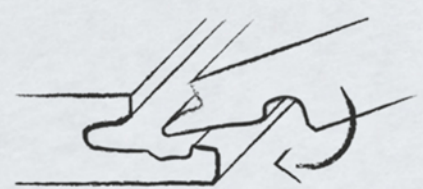
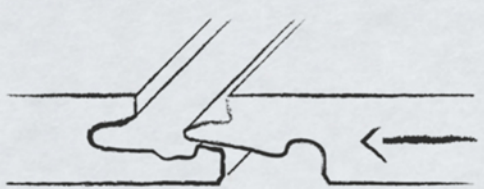
Easy to clean

UNICLIC TECHNOLOGY

Uniclic was the first one-piece locking profile to be introduced to the market. Over the years it became the industry's favorite locking technology thanks to its unmatched production efficiency and technical performance.

There are many advantages of uniclick locking system that makes the product more easy and simple to use.

1. Uniclic is fast and simple
2. it has to be installed by an angular rotation movement.
3. can also be installed in a horizontal way by snapping the planks into each other.
4. no unwanted gaps or spaces between floorboards.
5. no height differences and a seamless joint
6. Uniclic profiles interlock very securely.
7. Ensured Long- Lasting Stability



How to install the SPC Flooring?

Adjust row so end cut is not less than 8".

Use shims to allow 3/8" expansion gap between the planks and the walls, or stationary interior room objects, so there is room for normal expansion and movement.

Starting from the LEFT with the tongue facing the wall, carefully place the first board in place.

Align the next piece by overlapping the short end of the first board, Engage the short end at a 45° angle of the tongue and groove.

The board must be flat to engage completely. Tap lightly into place by using a rubber mallet and tapping block to firmly lock short end. Continue in this manner until reaching the final plank in the first row.

Cut the final board piece to length.

Begin the second row with the cutpiece from the first row. If the cut piece is shorter than 8" (20cm), do not use it. Instead, begin with a new board to the left as necessary to align the edges of the end joint of the first row.

Carefully push the board down until the tongue and groove lock together on the long side and ends.

Position the first board of the second row in place by angling it up slightly, pushing forward and interlocking the long side of the tongue. Slide the board to the left as necessary to align the edges of the end joint of the first row.

Carefully push the board down until the tongue and groove lock together on the long side and ends.

Install second board of the second row (same as step 4 above). Slide close to the end joint without touching it. Ensure board lays flat.

Attach a scrap piece of floor to bridge gap between ends of planks.

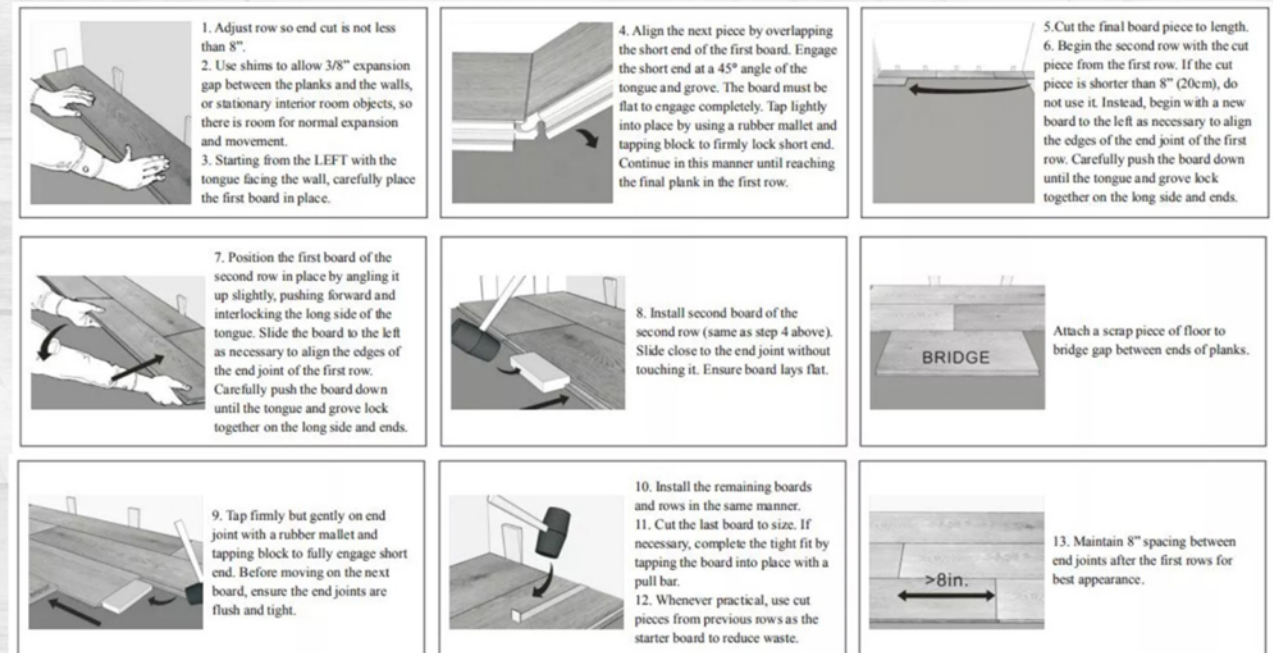
Tap firmly but gently on end joint with a rubber mallet and tapping block to fully engage short end. Before moving on the next board, ensure the end joints are flush and tight.

Install the remaining boards and rows in the same container.

Cut the last board to size. If necessary, complete the tight fit by tapping the board into place with a pull bar.

Whenever practical, use cut pieces from previous rows as the starter board to reduce waste.

Maintain 8" spacing between end joints after the first rows for best appearance.



COLLECTION





THICKNESS	:	3 TO 7 MM
WEAR LAYER	:	0.3 AND 0.5 MM
SIZE	:	180 X 1220 MM
FINISH	:	MATT
INSTALLUTION METHOD	:	UNILIN UNICLIC

QSW- 421 (SPANISH CEDAR)



THICKNESS	:	3 TO 7 MM
WEAR LAYER	:	0.3 AND 0.5 MM
SIZE	:	180 X 1220 MM
FINISH	:	MATT
INSTALLUTION METHOD	:	UNILIN UNICLIC

QSW- 422 (WHITE LIMBA WOOD)



THICKNESS	:	3 TO 7 MM
WEAR LAYER	:	0.3 AND 0.5 MM
SIZE	:	180 X 1220 MM
FINISH	:	MATT
INSTALLUTION METHOD	:	UNILIN UNICLIC

QSW- 423 (TIGER WOOD)



THICKNESS	:	3 TO 7 MM
WEAR LAYER	:	0.3 AND 0.5 MM
SIZE	:	180 X 1220 MM
FINISH	:	MATT
INSTALLUTION METHOD	:	UNILIN UNICLIC

QSW- 424 (RED BEECH)



THICKNESS	:	3 TO 7 MM
WEAR LAYER	:	0.3 AND 0.5 MM
SIZE	:	180 X 1220 MM
FINISH	:	MATT
INSTALLUTION METHOD	:	UNILIN UNICLIC

QSW- 425 (DEEP CHARCOAL)



THICKNESS	:	3 TO 7 MM
WEAR LAYER	:	0.3 AND 0.5 MM
SIZE	:	180 X 1220 MM
FINISH	:	MATT
INSTALLUTION METHOD	:	UNILIN UNICLIC

QSW- 426 (BUTTERNUT)



THICKNESS	:	3 TO 7 MM
WEAR LAYER	:	0.3 AND 0.5 MM
SIZE	:	180 X 1220 MM
FINISH	:	MATT
INSTALLUTION METHOD	:	UNILIN UNICLIC

QSW- 427 (HICKORY WOOD)



THICKNESS : 3 TO 7 MM
WEAR LAYER : 0.3 AND 0.5 MM
SIZE : 180 X 1220 MM
FINISH : MATT
INSTALLUTION METHOD : UNILIN UNICLIC

QSW- 428 (MAPLE WOOD WHITE)





THICKNESS	:	3 TO 7 MM
WEAR LAYER	:	0.3 AND 0.5 MM
SIZE	:	180 X 1220 MM
FINISH	:	MATT
INSTALLUTION METHOD	:	UNILIN UNICLIC

QSW- 429 (SLATE GREY)



THICKNESS	:	3 TO 7 MM
WEAR LAYER	:	0.3 AND 0.5 MM
SIZE	:	180 X 1220 MM
FINISH	:	MATT
INSTALLUTION METHOD	:	UNILIN UNICLIC

QSW- 430 (GREYWOOD)



THICKNESS	:	3 TO 7 MM
WEAR LAYER	:	0.3 AND 0.5 MM
SIZE	:	180 X 1220 MM
FINISH	:	MATT
INSTALLUTION METHOD	:	UNILIN UNICLIC

QSW- 431 (DARK WALNUT)



THICKNESS	:	3 TO 7 MM
WEAR LAYER	:	0.3 AND 0.5 MM
SIZE	:	180 X 1220 MM
FINISH	:	MATT
INSTALLUTION METHOD	:	UNILIN UNICLIC

QSW- 432 (CREAM BONE)



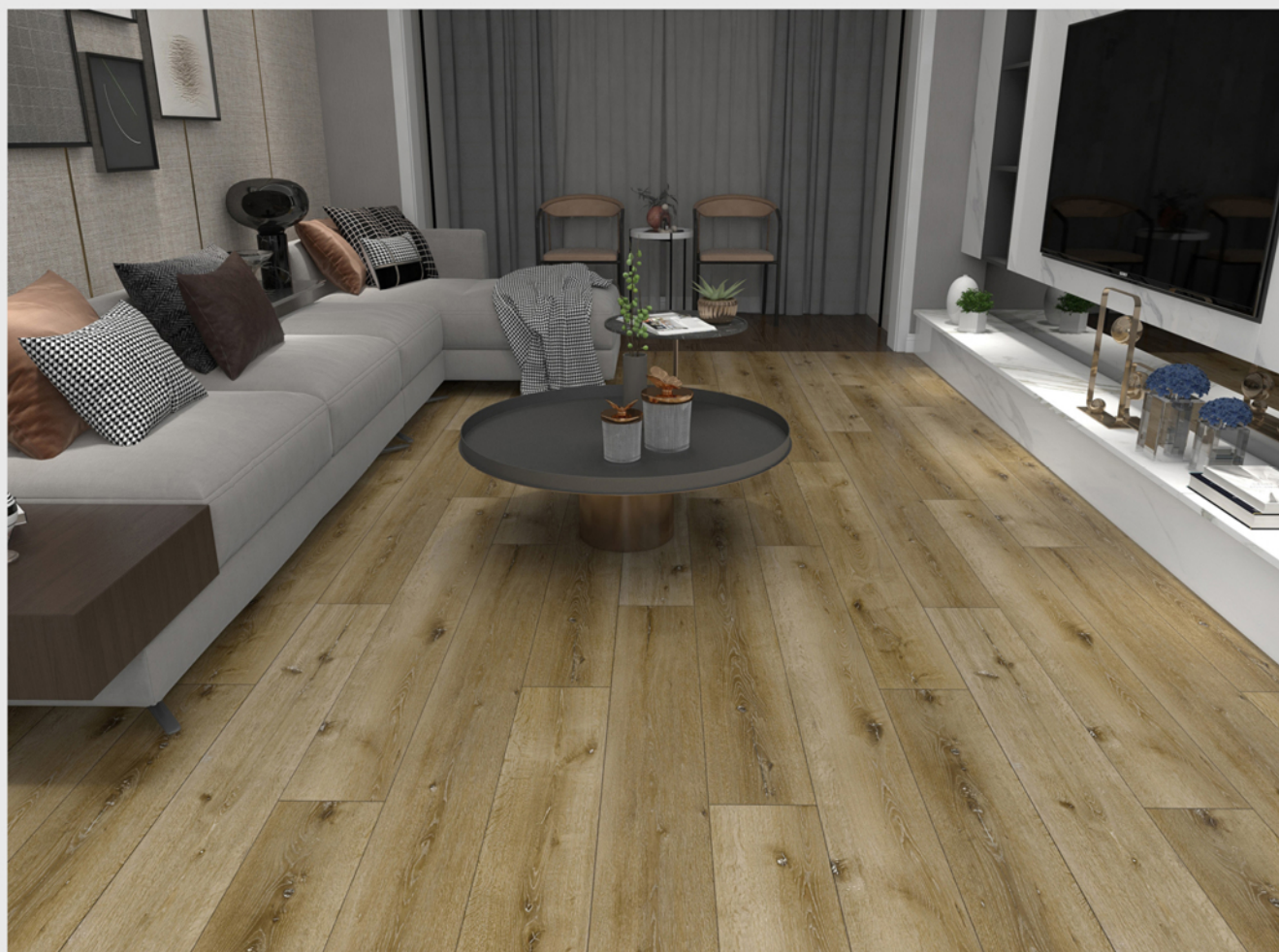
THICKNESS	:	3 TO 7 MM
WEAR LAYER	:	0.3 AND 0.5 MM
SIZE	:	180 X 1220 MM
FINISH	:	MATT
INSTALLUTION METHOD	:	UNILIN UNICLIC

QSW- 433 (TRES NATURALE)



THICKNESS	:	3 TO 7 MM
WEAR LAYER	:	0.3 AND 0.5
SIZE	:	180 X 1220 MM
FINISH	:	MATT
INSTALLUTION METHOD	:	UNILIN UNICLIC

QSW- 434 (EBONY WOOD)



THICKNESS	:	3 TO 7 MM
WEAR LAYER	:	0.3 AND 0.5
SIZE	:	180 X 1220 MM
FINISH	:	MATT
INSTALLUTION METHOD	:	UNILIN UNICLIC

QSW- 435 (OAK WOOD GREY)



THICKNESS : 3 TO 7 MM
WEAR LAYER : 0.3 AND 0.5
SIZE : 180 X 1220 MM
FINISH : MATT
INSTALLUTION METHOD : UNILIN UNICLIC

QSW- 436 (ANTIQUÉ PINE)





THICKNESS	:	3 TO 7 MM
WEAR LAYER	:	0.3 AND 0.5
SIZE	:	180 X 1220 MM
FINISH	:	MATT
INSTALLUTION METHOD	:	UNILIN UNICLIC

QSW- 437 (PACIFIC PEARL)



THICKNESS	:	3 TO 7 MM
WEAR LAYER	:	0.3 AND 0.5
SIZE	:	180 X 1220 MM
FINISH	:	MATT
INSTALLUTION METHOD	:	UNILIN UNICLIC

QSW- 438 (MAHOGANY WOOD)





THICKNESS	:	3 TO 7 MM
WEAR LAYER	:	0.3 AND 0.5
SIZE	:	180 X 1220 MM
FINISH	:	MATT
INSTALLUTION METHOD	:	UNILIN UNICLIC

QSW- 439 (CARBON GREY)



THICKNESS	:	3 TO 7 MM
WEAR LAYER	:	0.3 AND 0.5
SIZE	:	180 X 1220 MM
FINISH	:	MATT
INSTALLUTION METHOD	:	UNILIN UNICLIC

QSW- 440 (CARMEL BROWN)



THICKNESS	:	3 TO 7 MM
WEAR LAYER	:	0.3 AND 0.5
SIZE	:	180 X 1220 MM
FINISH	:	MATT
INSTALLUTION METHOD	:	UNILIN UNICLIC

QSW- 441 (CHESTNUT CHERRY)



THICKNESS	:	3 TO 7 MM
WEAR LAYER	:	0.3 AND 0.5
SIZE	:	180 X 1220 MM
FINISH	:	MATT
INSTALLUTION METHOD	:	UNILIN UNICLIC

QSW- 442 (BRUNETTE WOOD)



Specification	Property	Test Method	Result
SPC core thickness : 4 to 7 mm	Dimensions	EN 427	1220*180mm
	Thickness Over All	EN 428	3.0 mm, 4.0 mm, 5.0 mm, 7.0 mm
Wear layer : 0.3/0.5 mm	Thickness Wear Layer	EN 429	0.3 mm, 0.5 mm
	Pell Strength of Layers	EN 431	Pass
Plank size : 180x1220 mm, 302x604 mm	Shear Forces of Layers	EN 432	Good
	Residual Indentations	EN 433	Mean Value \leq 0.1mm
Padding : IXPE Black 1.00/1.50 mm	Dimension Stability	EN 434	Shrinkage \leq 0.12%/Curling \leq 1.2mm
	Resistance to Chemicals	EN 425	Class 0
Material : 100% Virgin	Castot Chair Continuous	EN 425	No Disturbance/No Delamination
	Light Fastness	ISO 105 B02	\geq 6
Click lock : Unilin Uniclic	ASTM E84-03	NFPA Class B1	
	Slip Resistance	DIN 51130	R9
Warranty : 15 years residential and 10 years commercial			

SPC Packing

Plank Thickness MM	Sqm/ plank	Std Kg/Sq Mtr	Sqm per Box	Kg per Plank	No of plank per box	Kg Per Box	Box Per Pallet	Pallet Per Containe	SQM Per Container	Weight per 20' Container	Weight of all pallets	Gross Weight
1.5	0.2196	3.0000	7.0272	0.6588	32.00	21.0816	60	20	8432.64	25298	700.00	25998
2.0	0.2196	4.0000	5.2704	0.8784	24.00	21.0816	60	20	6324.48	25298	700.00	25998
2.5	0.2196	5.0000	4.1724	1.0980	19.00	20.8620	60	20	5006.88	25034	700.00	25734
3.0	0.2196	6.0000	3.5136	1.3176	16.00	21.0816	60	20	4216.32	25298	700.00	25998
3.5	0.2196	7.0000	3.5136	1.5372	14.00	21.5208	60	20	3689.28	25825	700.00	26525
4.0	0.2196	8.0000	2.6352	1.7568	12.00	21.0816	60	20	3162.24	25298	700.00	25998
4.5	0.2196	9.0000	2.4156	1.9764	11.00	21.7404	60	20	2898.72	26088	700.00	26788
5.0	0.2196	10.0000	2.1960	2.1960	10.00	21.9600	60	20	2635.20	26352	700.00	27052
5.5	0.2196	11.0000	1.9764	2.4156	9.00	21.7404	60	20	2371.68	26088	700.00	26788
6.0	0.2196	12.0000	1.7568	2.6352	8.00	21.0816	60	20	2108.16	25298	700.00	25998
6.5	0.2196	13.0000	1.5372	2.8548	7.00	19.9836	60	20	1844.64	23980	700.00	24680
7.0	0.2196	14.0000	1.5372	3.0744	7.00	21.5208	60	20	1844.64	25825	700.00	26525
7.5	0.2196	15.0000	1.3176	3.2940	6.00	19.7640	60	20	1581.12	23717	700.00	24417
8.0	0.2196	16.0000	1.3176	3.5136	6.00	21.0816	60	20	1581.12	25298	700.00	25998
8.5	0.2196	17.0000	1.0980	3.7332	5.00	18.6660	60	20	1317.60	22399	700.00	23099

MEGANTM

MEGAN CERA GLOBAL PVT LTD

307/308, Corporate Avenue, Bh. Crystal mall,
Kalawad Road, Rajkot, Gujarat, India-360005.

www.megancera.com | info@megancera.com

Call/WhatsApp:- +91 98798 73712