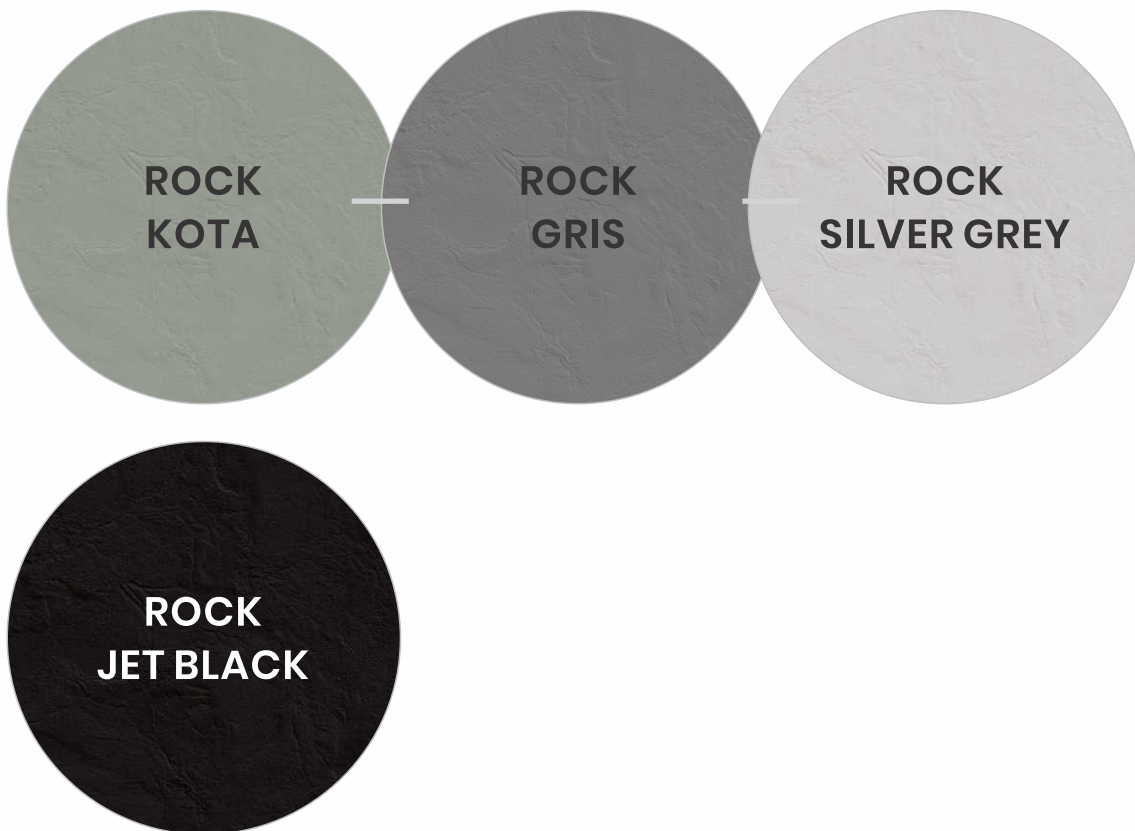


Discover Enigmatic
& High-end
COLOURS



600x
600mm
full body tiles

600x600mm

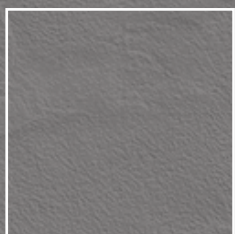


Surface : Matt
Category : Basic

ROCK KOTA

ROCK
PUNCH

600x600mm



Surface : Matt
Category : Basic

ROCK GRIS

ROCK
PUNCH

600x600mm



Surface : Matt
Category : Basic

ROCK SILVER GREY

ROCK
PUNCH

600x600mm



Surface : Matt

Category : Super Plus

ROCK JET BLACK

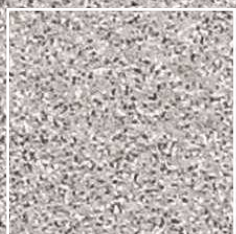
ROCK
PUNCH

Discover Enigmatic
& High-end
COLOURS



600x
600mm
full body tiles

600x600mm



Surface: Matt
Category: Basic

BLAST MUD

BLAST
PUNCH

600x600mm



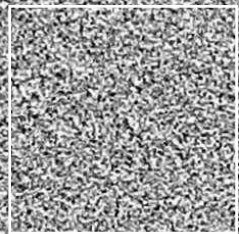
Surface : Matt

Category : Super Plus

BLAST BIANCO

BLAST
PUNCH

600x600mm

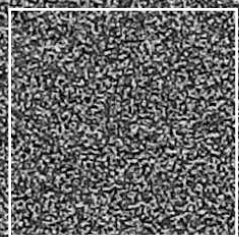


Surface: Matt
Category: Basic

BLAST GRANITE

BLAST
PUNCH

600x600mm



Surface: Matt

Category: Super Plus

BLAST NERO

BLAST
PUNCH

600x600mm



Surface : Matt
Category : Basic

BLAST CONCRETE

BLAST
PUNCH

600x600mm



Surface: Matt
Category: Plus

BLAST COPPER

BLAST
PUNCH

600x600mm

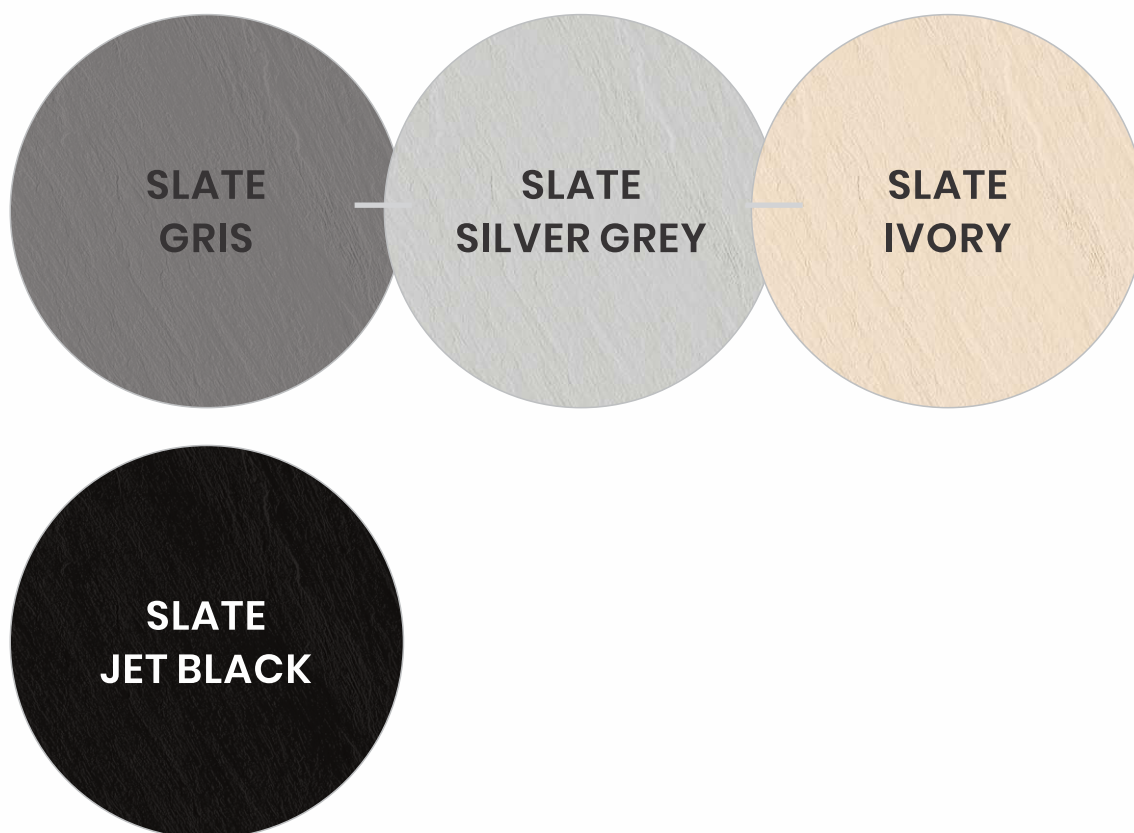


Surface : Matt
Category : Basic

BLAST BEIGE

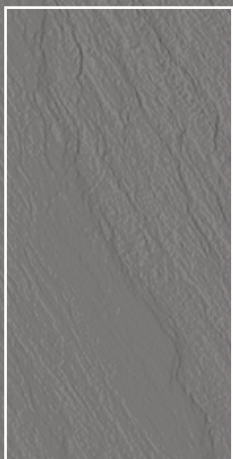
BLAST
PUNCH

Discover Enigmatic
& High-end
COLOURS



600x
1200mm
full body tiles

600x1200mm



Surface : Matt
Category : Basic

SLATE GRIS

SLATE
PUNCH

600x1200mm



Surface : Matt
Category : Basic

SLATE SILVER GREY

SLATE
PUNCH

600x1200mm



Surface : Matt
Category : Basic

SLATE IVORY

SLATE
PUNCH

600x1200mm



Surface : Matt

Category : Super Plus

SLATE JET BLACK

SLATE
PUNCH

Technical Specification

TECHNICAL DETAILS	STANDARD AS PER ISO-13006/EN176 GROUP BIa	MEAN VALUE OF FULL BODY VITRIFIED TILES	METHOD OF TEST
Deviation In Length & Width	± 0.60%	± 0.10%	ISO-10545-2
Deviation In Thickness	± 5.00%	± 2.00%	ISO-10545-2
Straightness Of Sides	± 0.50%	± 0.10%	ISO-10545-2
Rectangularity	± 0.60%	± 0.10%	ISO-10545-2
Surface Flatness	± 0.50%	± 0.10%	ISO-10545-2
Glossiness	Gloss Meter	Min. 90%	Glossometer
Water Absorption	≤ 0.50%	E ≤ 0.05%	ISO-10545-3
Breaking Strength	1300 N	2000 N	ISO-10545-4
Abrasion Resistance	Max. 175mm	Max. 145mm ³	ISO-10545-6
Moh's Hardness	Min. 6	≥ 6*	EN101
Frost Resistance	Frost Proof	Frost Proof	ISO-10545-12
Thermal Shock	No Damage	No Damage	ISO-10545-9
Moisture Expansion	Nil	Nil	ISO-10545-10
Thermal Expansion	< 9 x 10 ⁻⁶	< 6 x 10 ⁻⁶	ISO-10545-8
Resistance of House Hold Chemical	No Damage	No Damage*	ISO-10545-13
Stain Resistance	Resistance	Resistance*	ISO-10545-14
Slip Resistance (Friction Co Efficient)	> 0.40	> 0.40	ISO-10545-17

Packing Details

Collection	Size	Thickness	Pieces / Box	Weight / Box (approx.)	Coverage Area / Box
Slate Punch	600x1200mm	9.5 ± 0.5mm	2 Pieces	29.50kg	15.5 ft ² or 1.44 mtr ²
Rock Punch & Blast Punch	600x600mm	8.5 ± 0.5mm	4 Pieces	28.50kg	15.5 ft ² or 1.44 mtr ²

Disclaimer

Casa reserves the right to delete & amend either totally or partially, any of the colours, shapes, sizes, references and other technical specifications contained in this catalogue at anytime. The colours of tiles shown in this catalogue are purely illustrative to printing process. Please refer actual sample before final selection. The details of sizes, colours and references should be verified for typographical errors.

MEGANTM

MEGAN CERA GLOBAL PVT LTD

307/308, Corporate Avenue, Bh. Crystal mall,
Kalawad Road, Rajkot, Gujarat, India-360005.

www.megancera.com | info@megancera.com