

MEGAN™

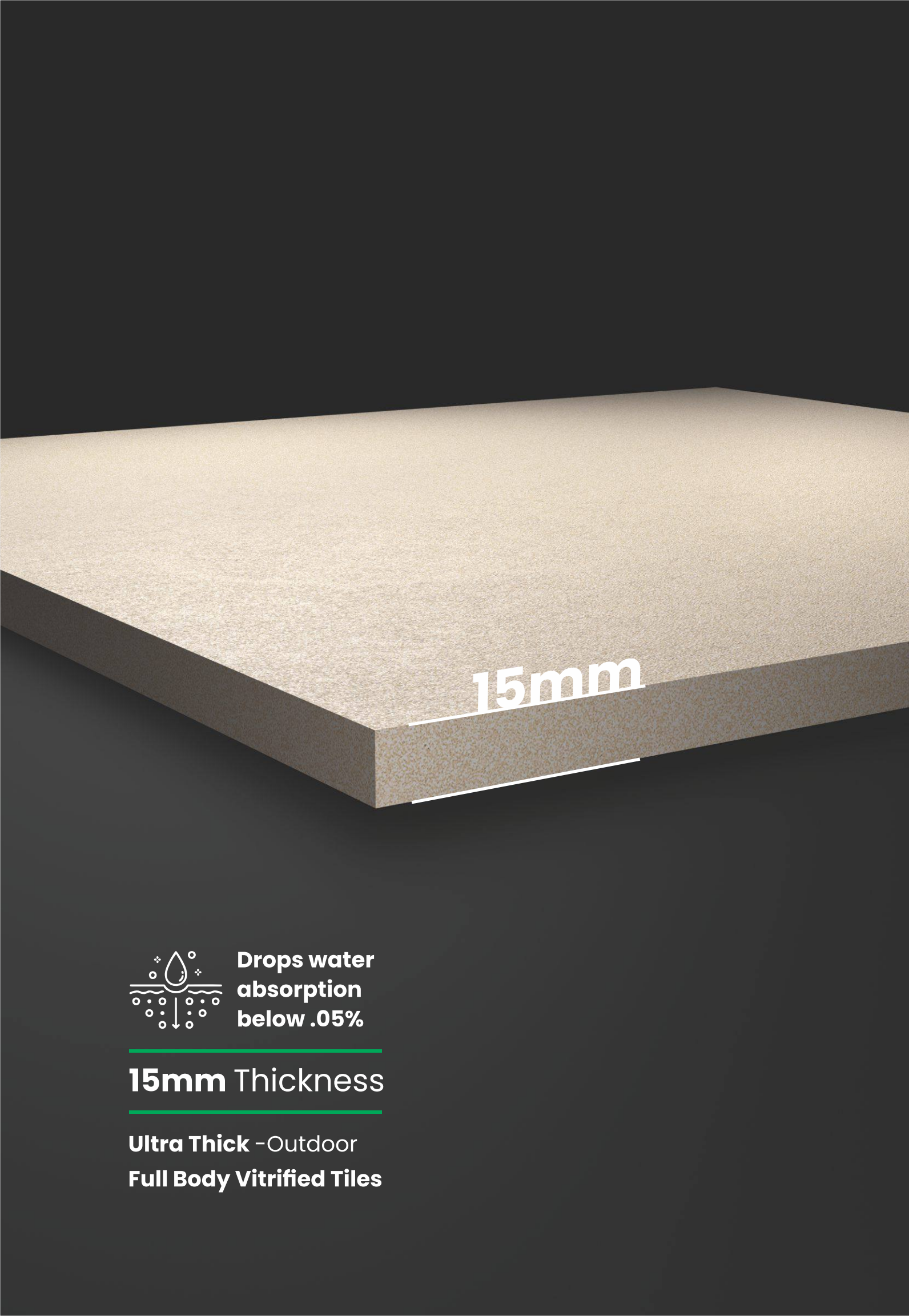


600x600mm

15MM THICKNESS

TABLE OF CONTENTS

Concept	03
Size & Surface	04
Application	04
User Guide	05
Product Range	06
Installation System	25
Certification	30
Technical Specification	31
Tile Cleaning	31
Casa All Collection	33



**Drops water
absorption
below .05%**

15mm Thickness

**Ultra Thick -Outdoor
Full Body Vitrified Tiles**

MEGAN™

■■■■■
CONCEPT

One of the most important conditions to create aesthetic and functional area is to choose materials suitable for the surfaces. In particular, floors that are the mostly commonly used parts of the outdoor spaces are an important factor to ensure that the conditions in the space meet the needs.

Heavy Duty Full Body Vitrified Tiles can be safely used in all internal and external spaces that are exposed to high load, water area, patios, landscape and pedestrian traffic. With luxury Concept develop in a variety of designs with amazing the 'Anti-Skid Surface' put this 15mm category high on versatility, without compromising the contemporary style.

is designed to meet the latest architecture and interior design needs.

SIZE AND SURFACE

Available size :

**600x
600mm**

Available thickness:

15mm Thickness

Surface :

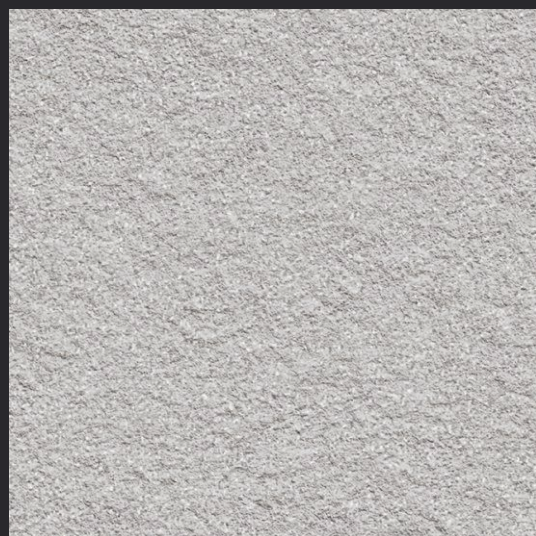
3

The collection are available in two punches making it feasible to install them in outdoor as well as heavy pedestrian area to create an appropriate ambience. These tiles are available in single format with single thickness to choose from making this collection suitable for all kind of applications from floor to pathways and water body area.

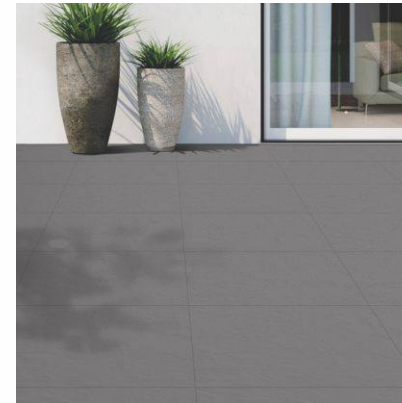
ROCK PUNCH



BLAST PUNCH



APPLICATION AREA



Courtyard Area



Heavy Traffic Area



Outdoor Area



Pool Area



Pathways



Parking Area

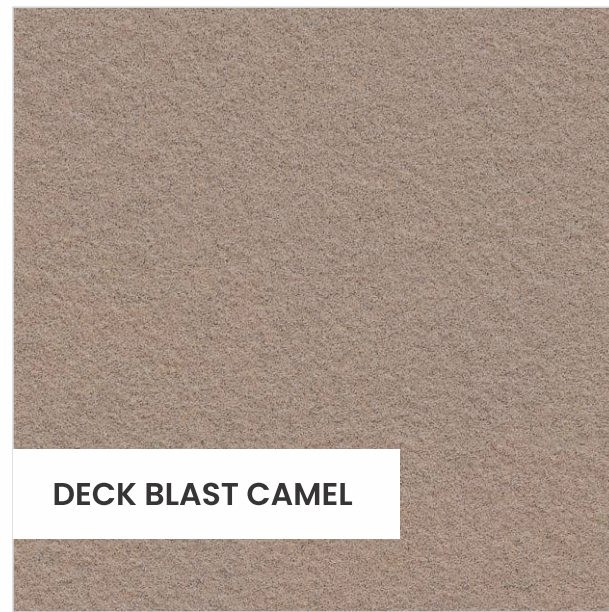
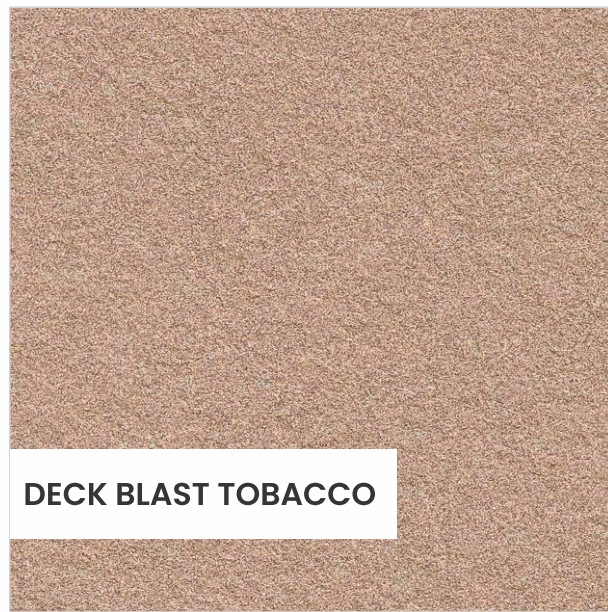
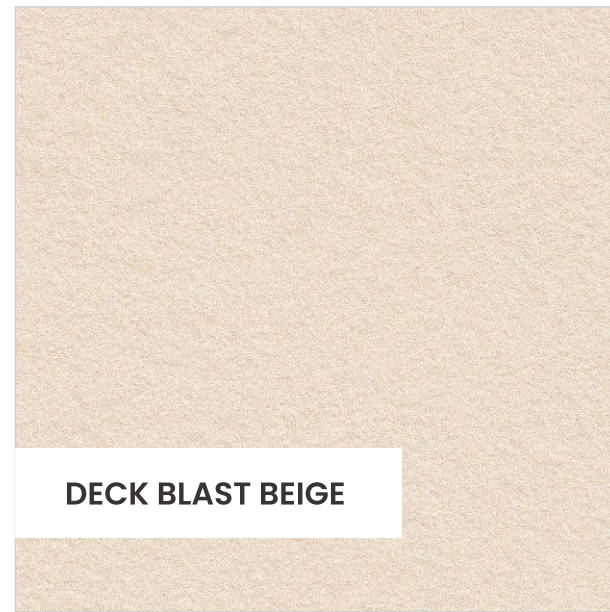
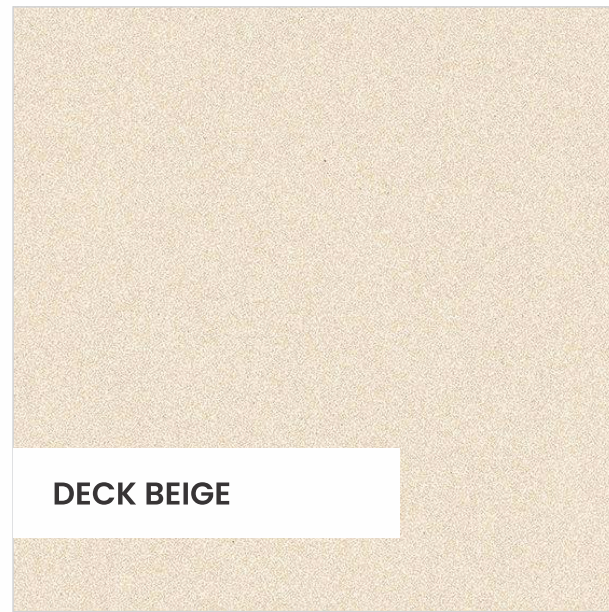
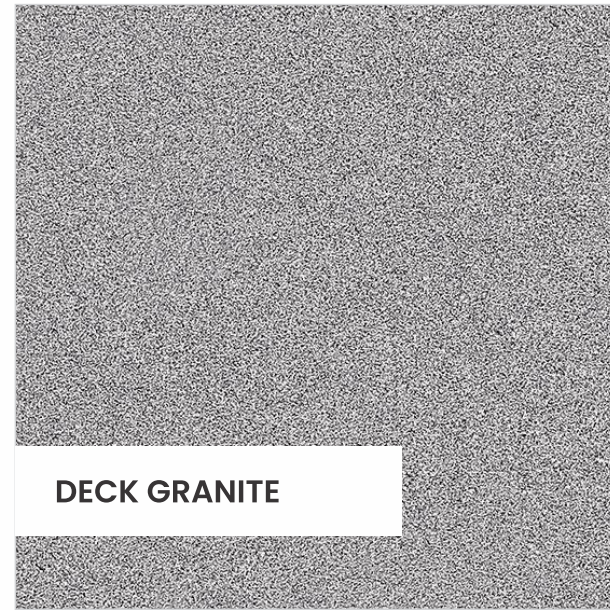
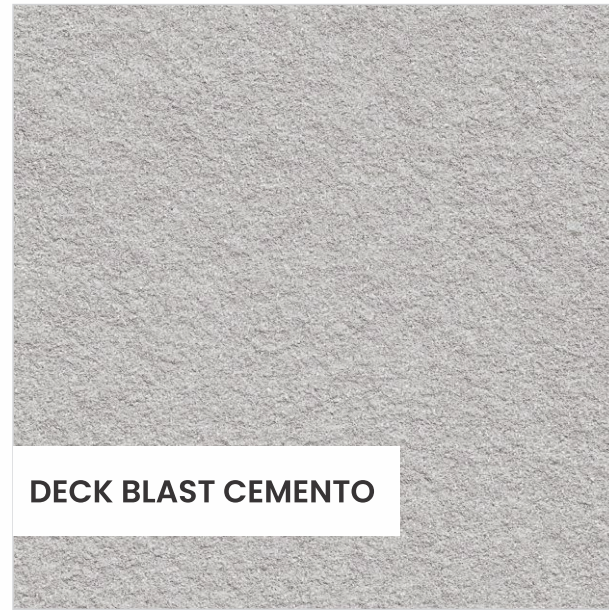
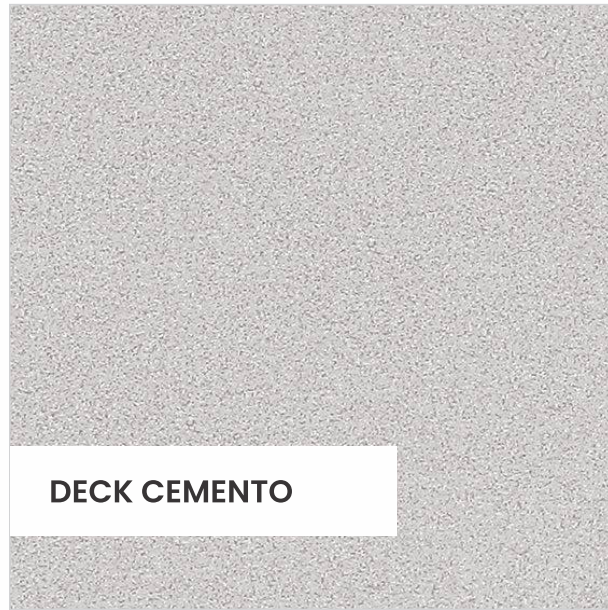
By beautifying the indoors and outdoors. The casadeck collection comes in multiple format with various shades of color, which make it highly suitable for all kinds of spaces. Along with being a perfect fit, this collection will also uplift the ambience of your space.

PRODUCT RANGE

600x600mm

TYPE : SOLID COLOR







**DECK
GRIGIO**



Category :
Light

Surface :
Anti-skid

Thickness :
15mm

**600x
600mm**



**DECK
ROCK GRIGIO**



Category :
Light

Punch :
Rock

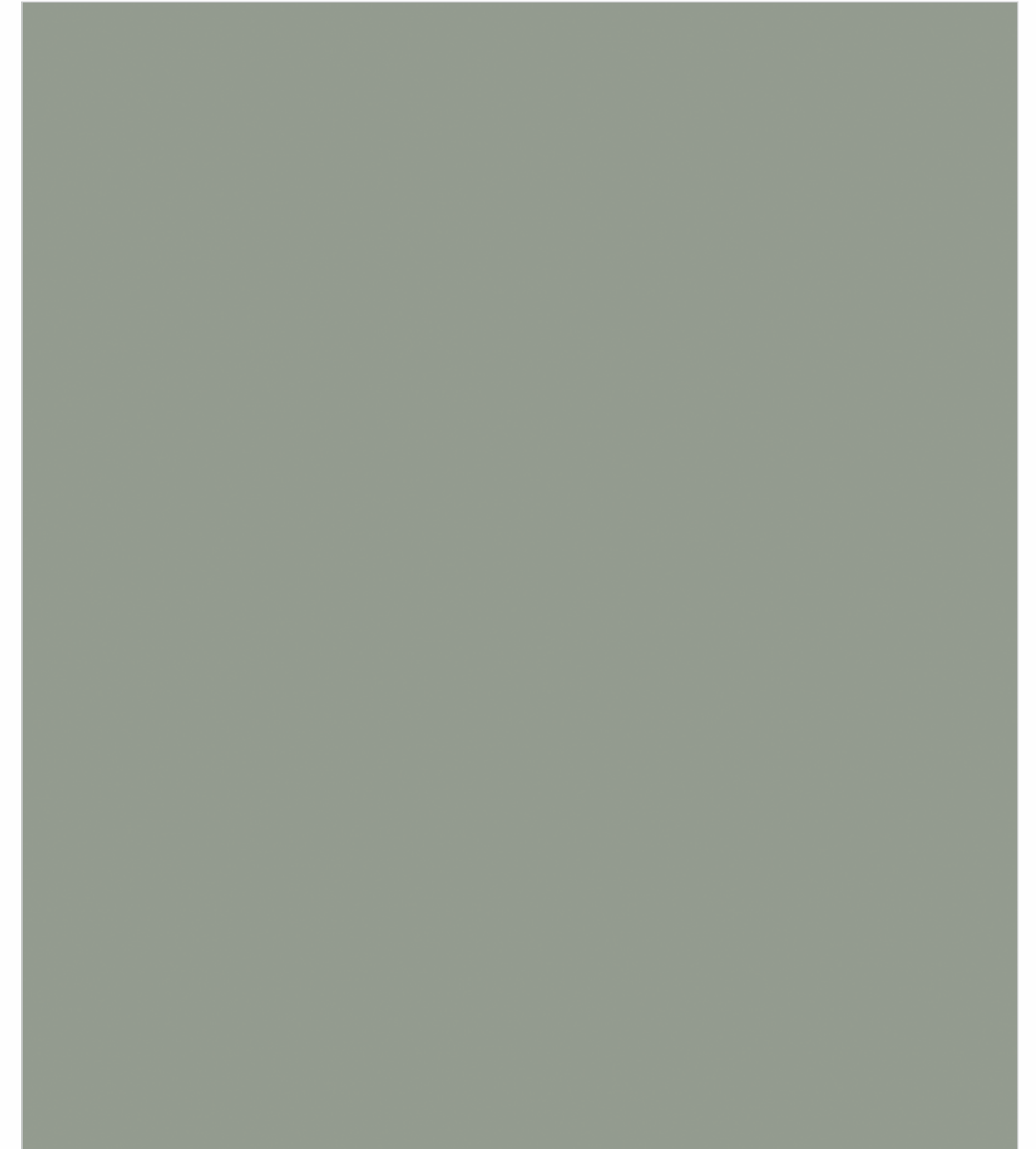
Surface :
Anti-skid

Thickness :
15mm

**600x
600mm**



**DECK
KOTA**



Category :
Light

Surface :
Anti-skid

Thickness :
15mm

**600x
600mm**



**DECK
ROCK KOTA**



Category :
Light

Punch :
Rock

Surface :
Anti-skid

Thickness :
15mm

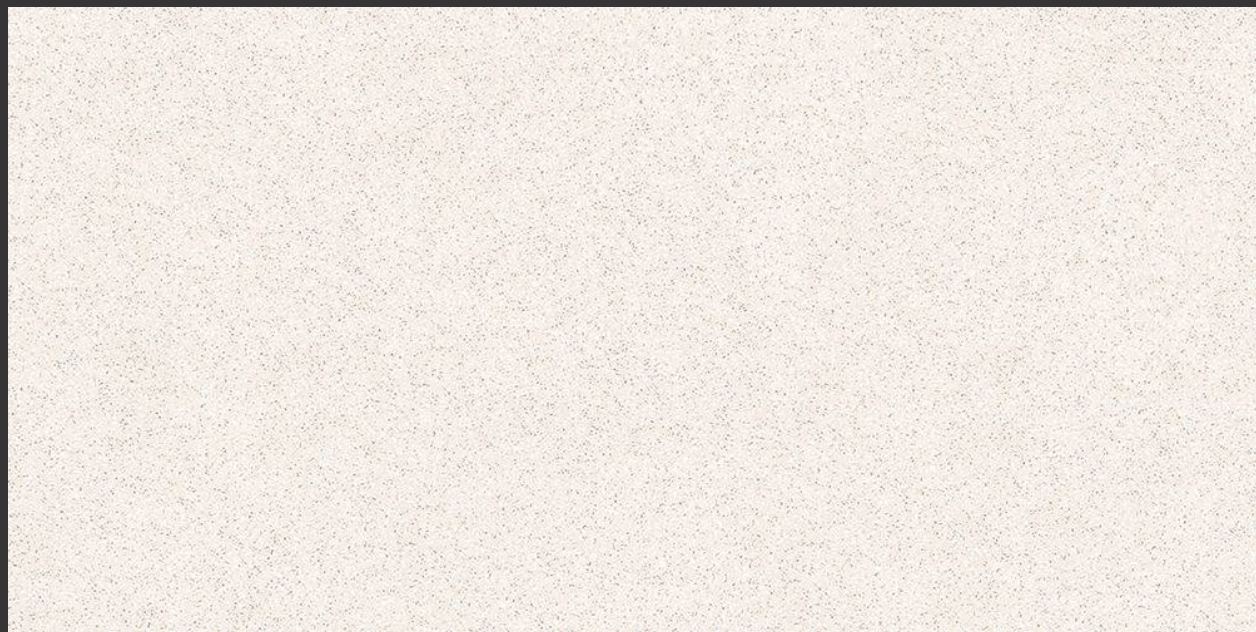
**600x
600mm**

600x1200mm in
15mm Thickness

First time in India



Finish : Deck Boost



Finish : Deck Matt

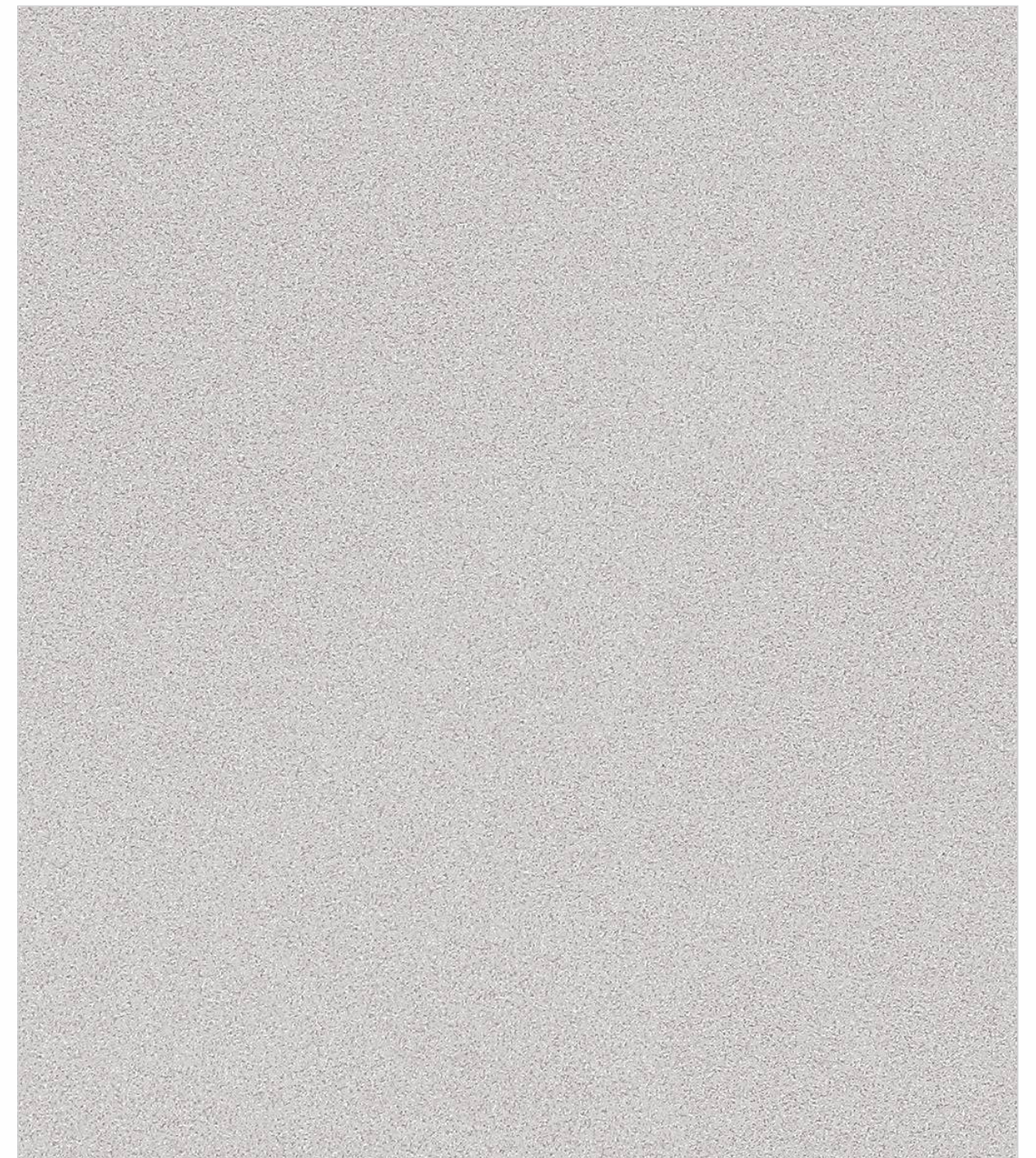
THE KEY TO INDOOR AND OUTDOOR DESIGN_

Inspired by rocks,
metamorphic stones composed almost
entirely of natural materials and small
quantities of other minerals that create
color changes and nuances. Such stones
are typically suitable for the outdoors but
can also be used indoors.





**DECK
CEMENTO**



Category :
Light

Surface :
Anti-skid

Thickness :
15mm

**600x
600mm**



**DECK
BLAST CEMENTO**



Category :
Light

Punch :
Blast

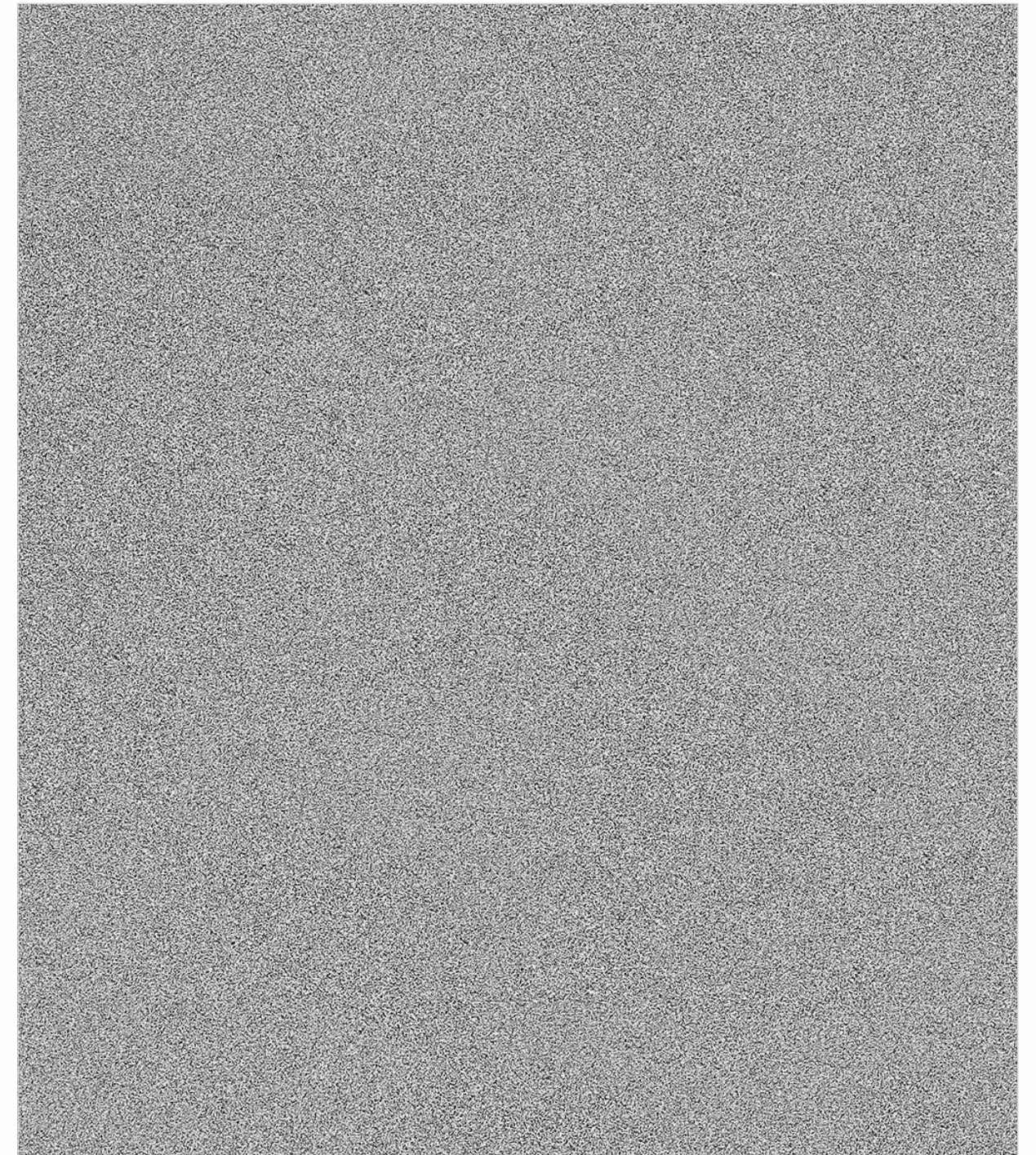
Surface :
Anti-skid

Thickness :
15mm

**600x
600mm**



**DECK
GRANITE**



Category :
Light

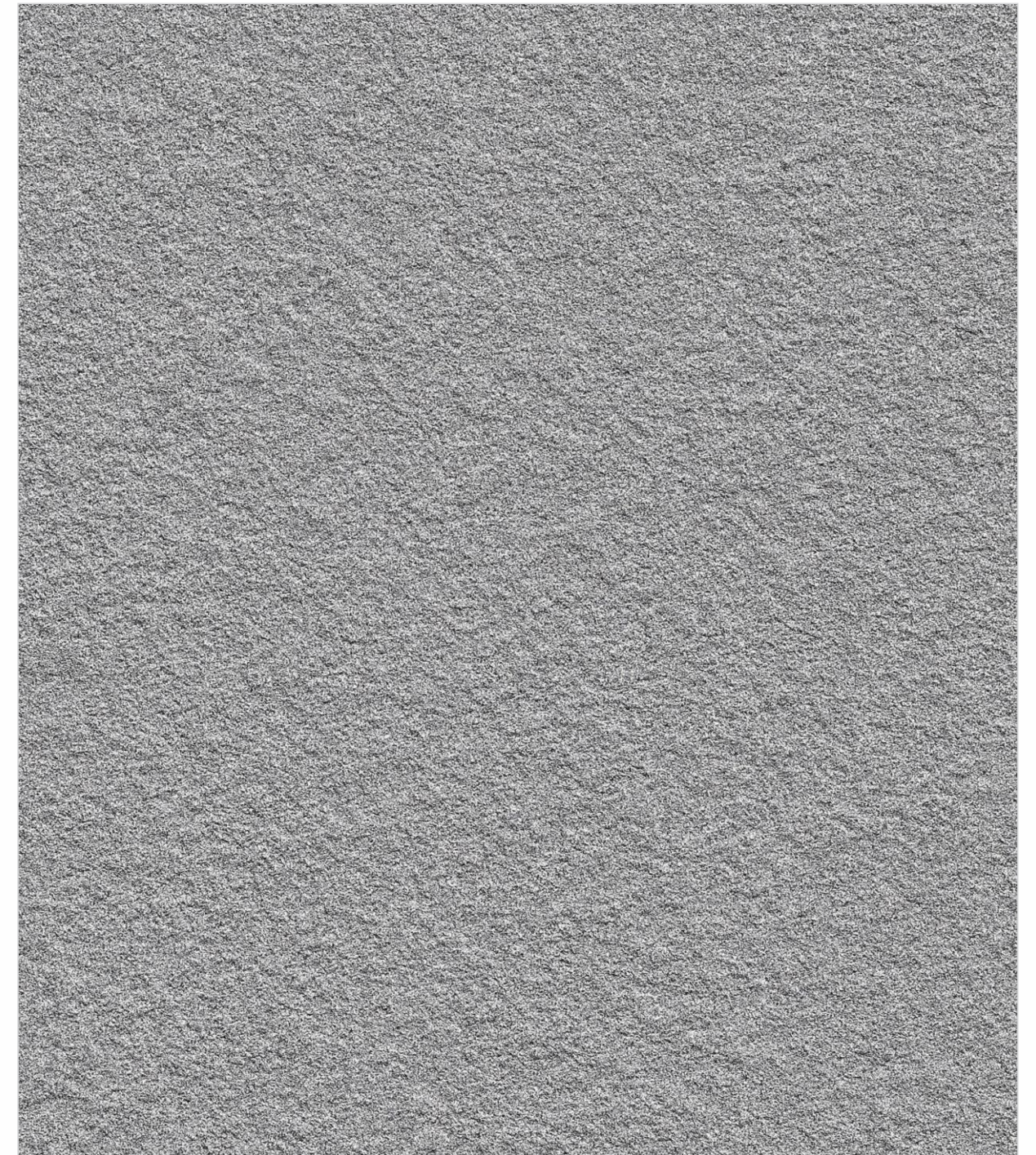
Surface :
Anti-skid

Thickness :
15mm

**600x
600mm**



DECK
BLAST GRANITE



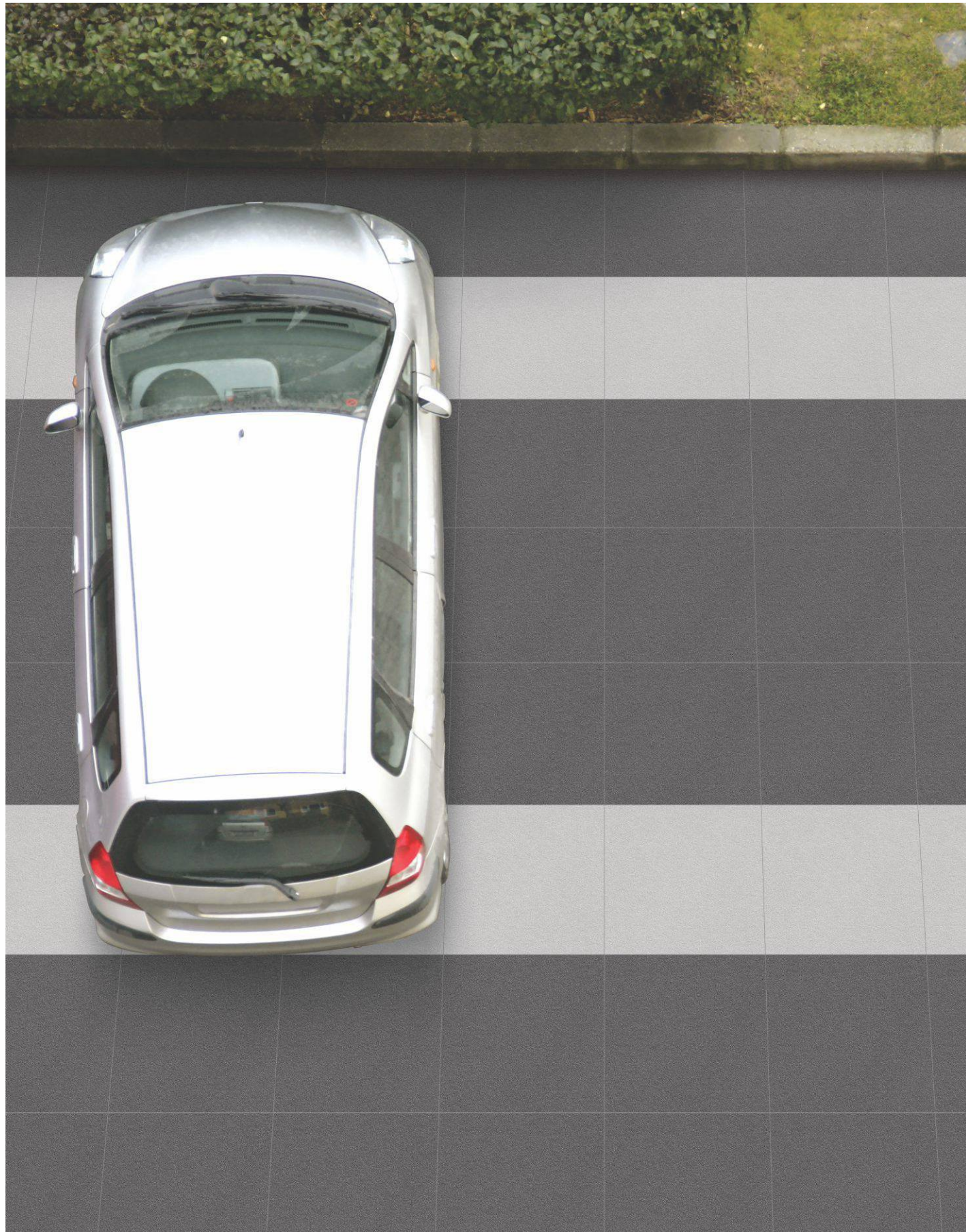
Category :
Light

Punch :
Blast

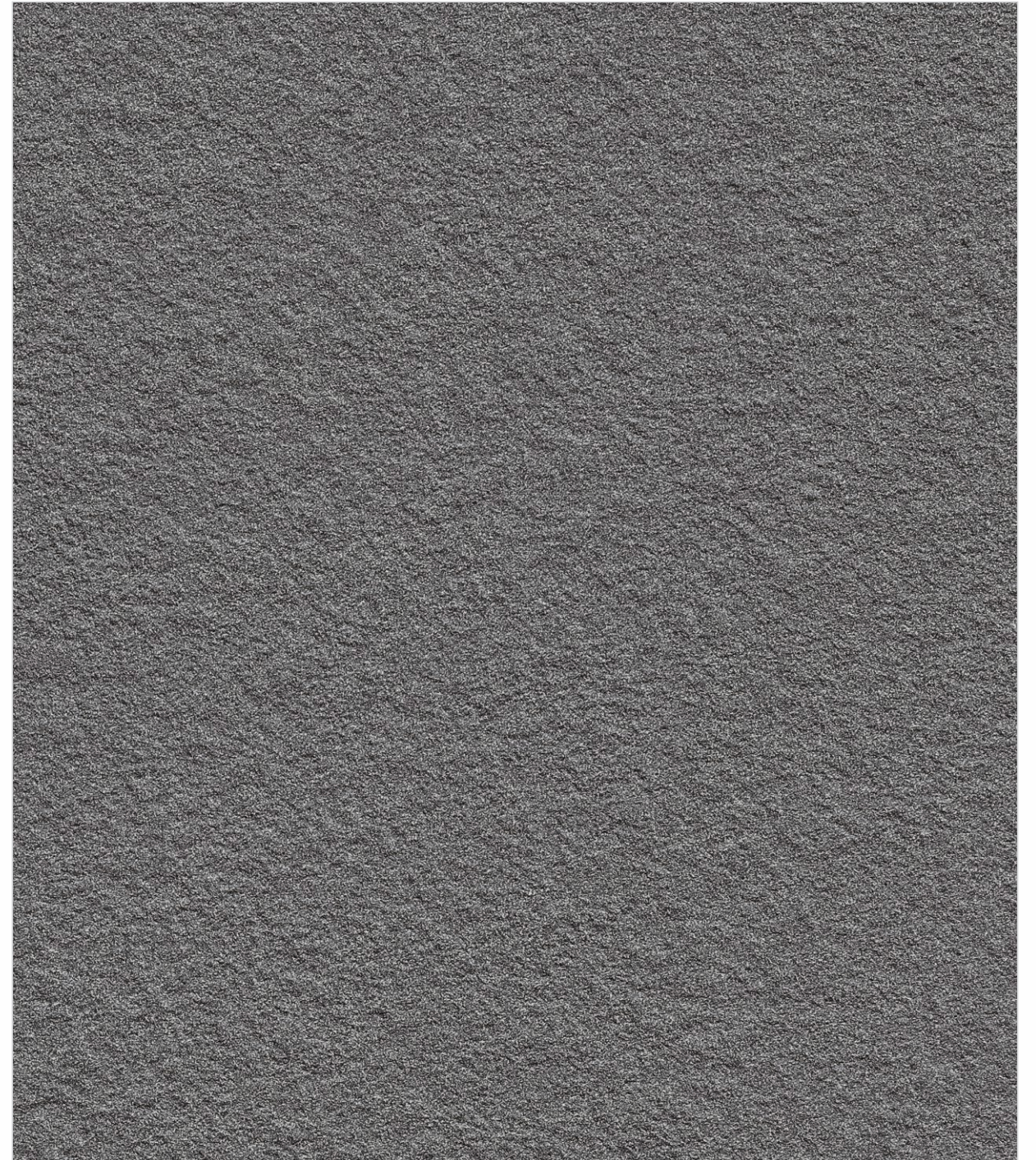
Surface :
Anti-skid

Thickness :
15mm

600x
600mm



**DECK
BLAST COAL**



Category :
Dark

Punch :
Blast

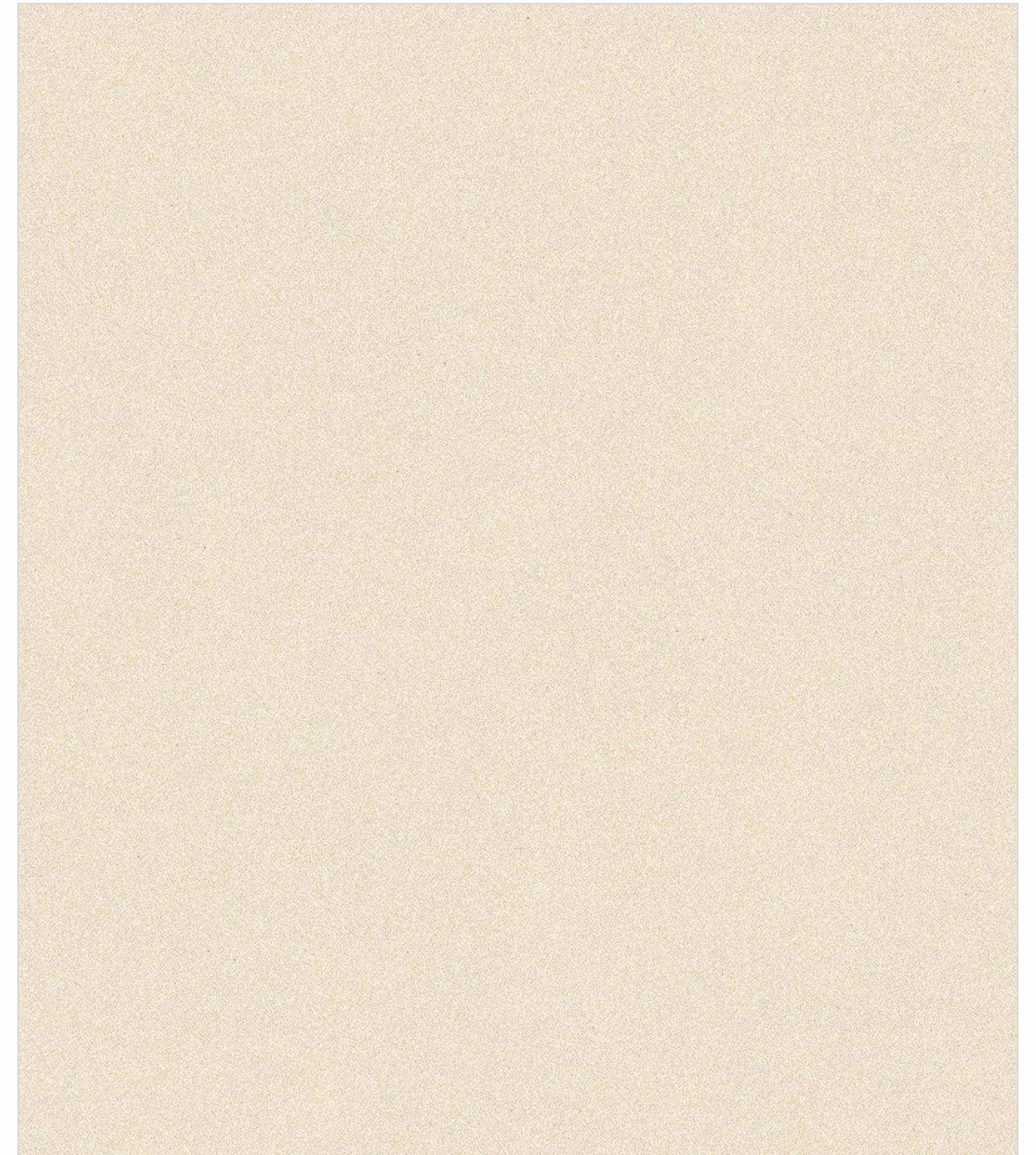
Surface :
Anti-skid

Thickness :
15mm

**600x
600mm**



**DECK
BEIGE**



Category :
Light

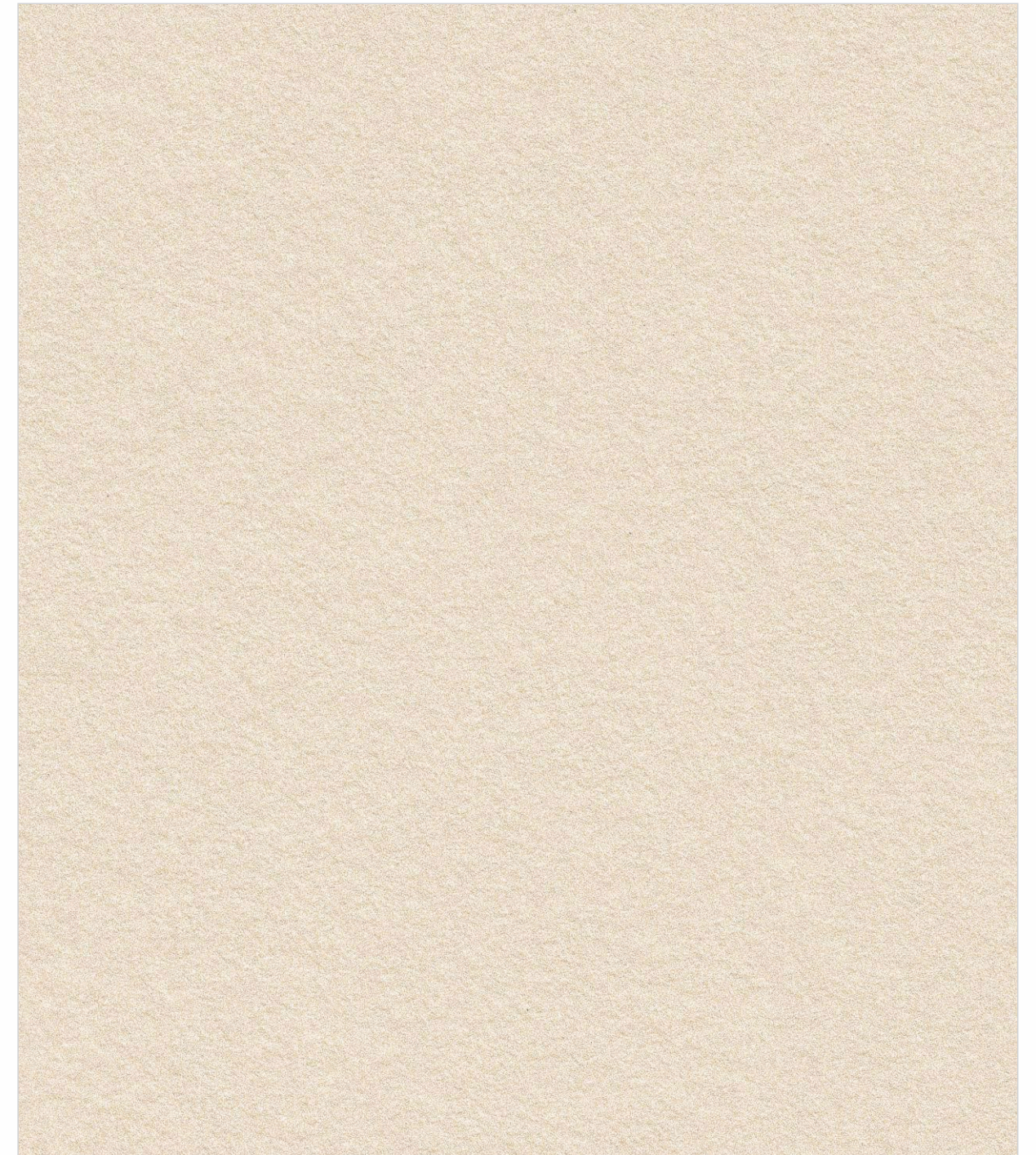
Surface :
Anti-skid

Thickness :
15mm

**600x
600mm**



**DECK
BLAST BEIGE**



Category :
Light

Punch :
Blast

Surface :
Anti-skid

Thickness :
15mm

**600x
600mm**



**DECK
TOBACCO**



Category :
Dark

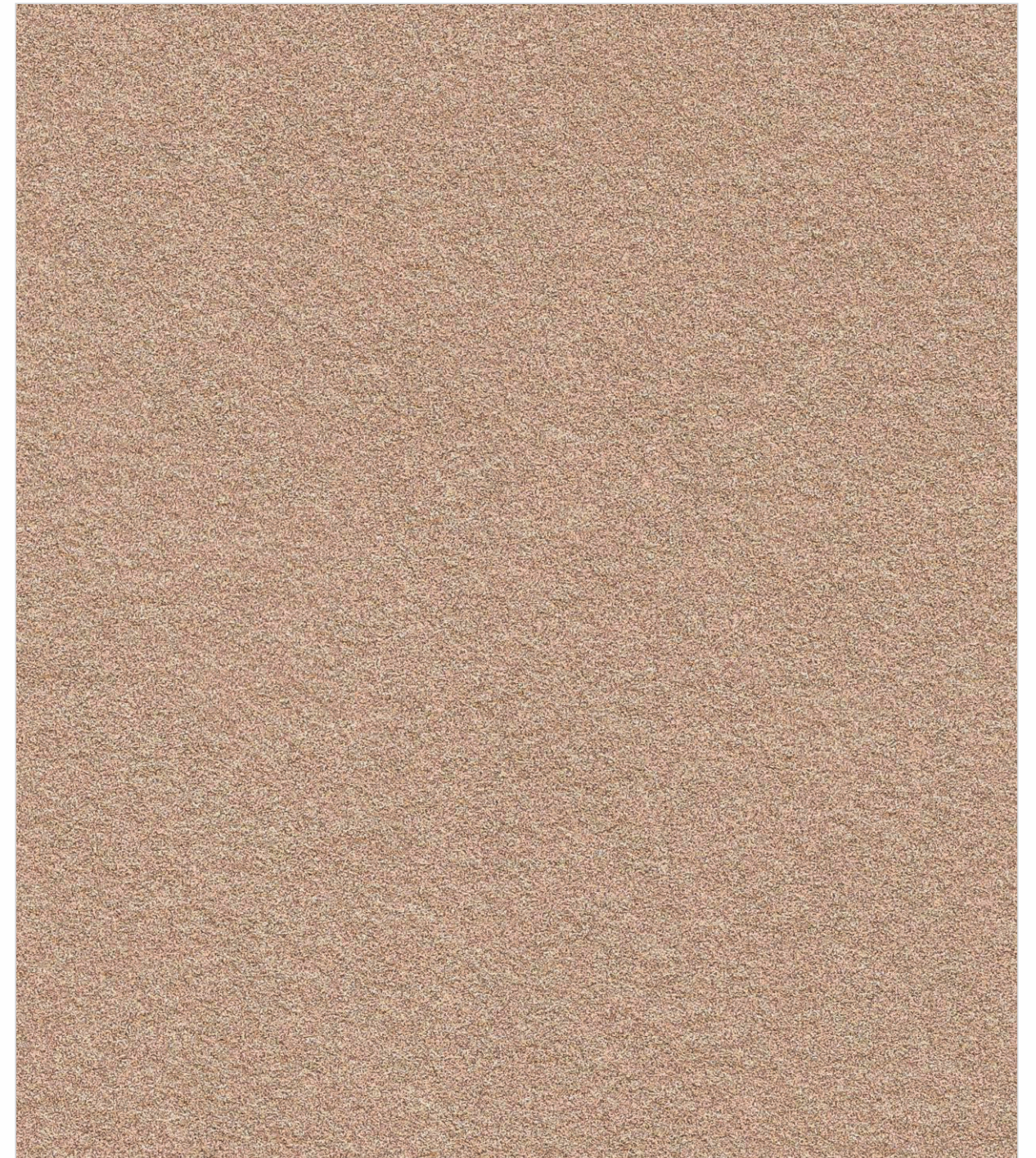
Surface :
Anti-skid

Thickness :
15mm

**600x
600mm**



DECK
BLAST TOBACCO



Category :
Dark

Punch :
Blast

Surface :
Anti-skid

Thickness :
15mm

600x
600mm



**DECK
BLAST CAMEL**



Category :
Dark

Punch :
Blast

Surface :
Anti-skid

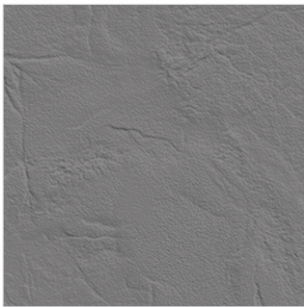
Thickness :
15mm

**600x
600mm**

HOUSE OF **FULL BODY** VITRIFIED TILES



Deck Grigio



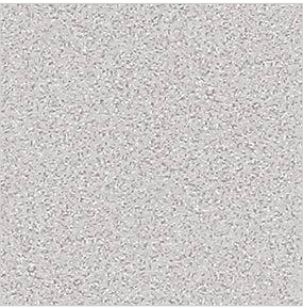
Deck Rock Grigio



Deck Kota



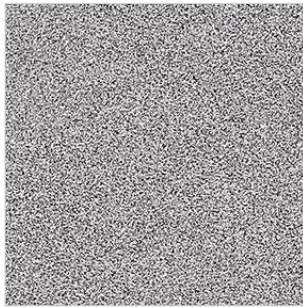
Deck Rock Kota



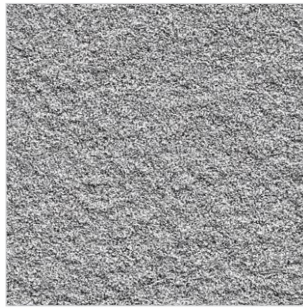
Deck Cemento



Deck Blast Cemento



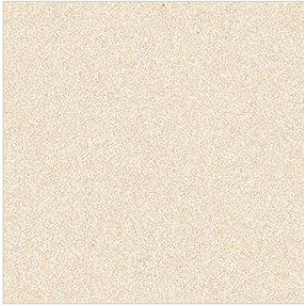
Deck Granite



Deck Blast Granite



Deck Blast Coal



Deck Beige



Deck Blast Beige



Deck Tabocco



Deck Blast Tabocco



Deck Blast Camel

Color Range	Design Name	Type	Category
[Dark Grey]	Deck Grigio	Plain Colour	Light
[Dark Grey with texture]	Deck Rock Grigio	Plain Colour	Light
[Olive Green]	Deck Kota	Plain Colour	Light
[Olive Green with texture]	Deck Rock Kota	Plain Colour	Light
[Light Grey]	Deck Cemento	Salt & Pepper	Light
[Light Grey with texture]	Deck Blast Cemento	Salt & Pepper	Light
[Dark Grey]	Deck Granite	Salt & Pepper	Light
[Dark Grey with texture]	Deck Blast Granite	Salt & Pepper	Light
[Dark Grey]	Deck Blast Coal	Salt & Pepper	Dark
[Light Beige]	Deck Beige	Salt & Pepper	Light
[Light Beige with texture]	Deck Blast Beige	Salt & Pepper	Light
[Brown]	Deck Tabocco	Salt & Pepper	Dark
[Brown with texture]	Deck Blast Tabocco	Salt & Pepper	Dark
[Dark Brown]	Deck Blast Camel	Salt & Pepper	Dark



Installation System

Certification

Technical Specification

Tile Cleaning

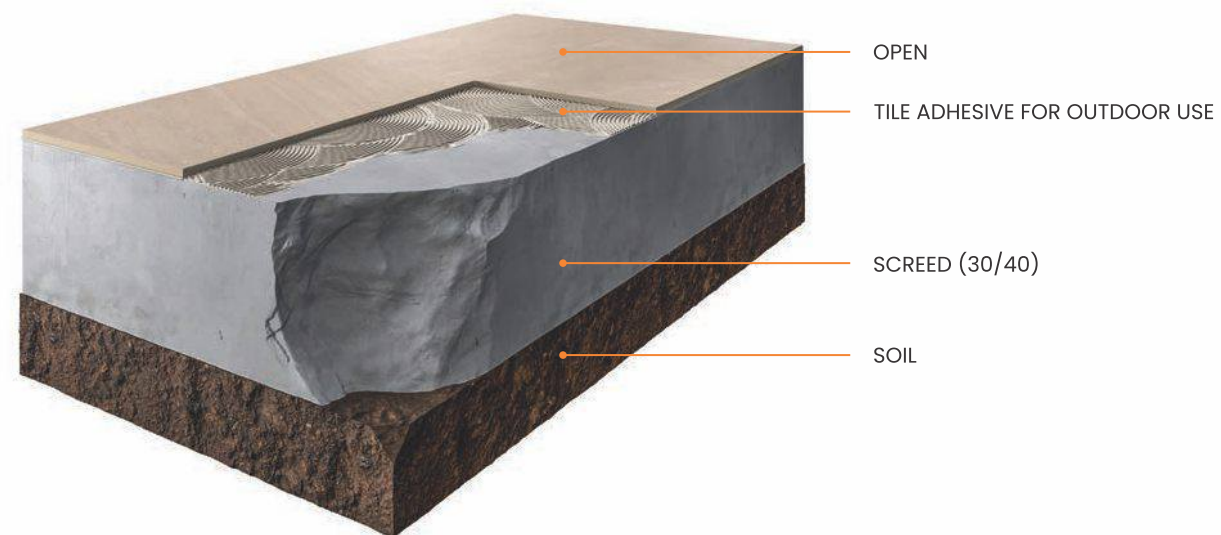
Installation System

Casa All Collection

LAYING ON SCREED



SUGGESTED PROCESS



INSTALLATION SYSTEMS



Clean the existing surface and check that the screed has been properly prepared: flat, dry and cured. Spread the adhesive evenly over the surface.



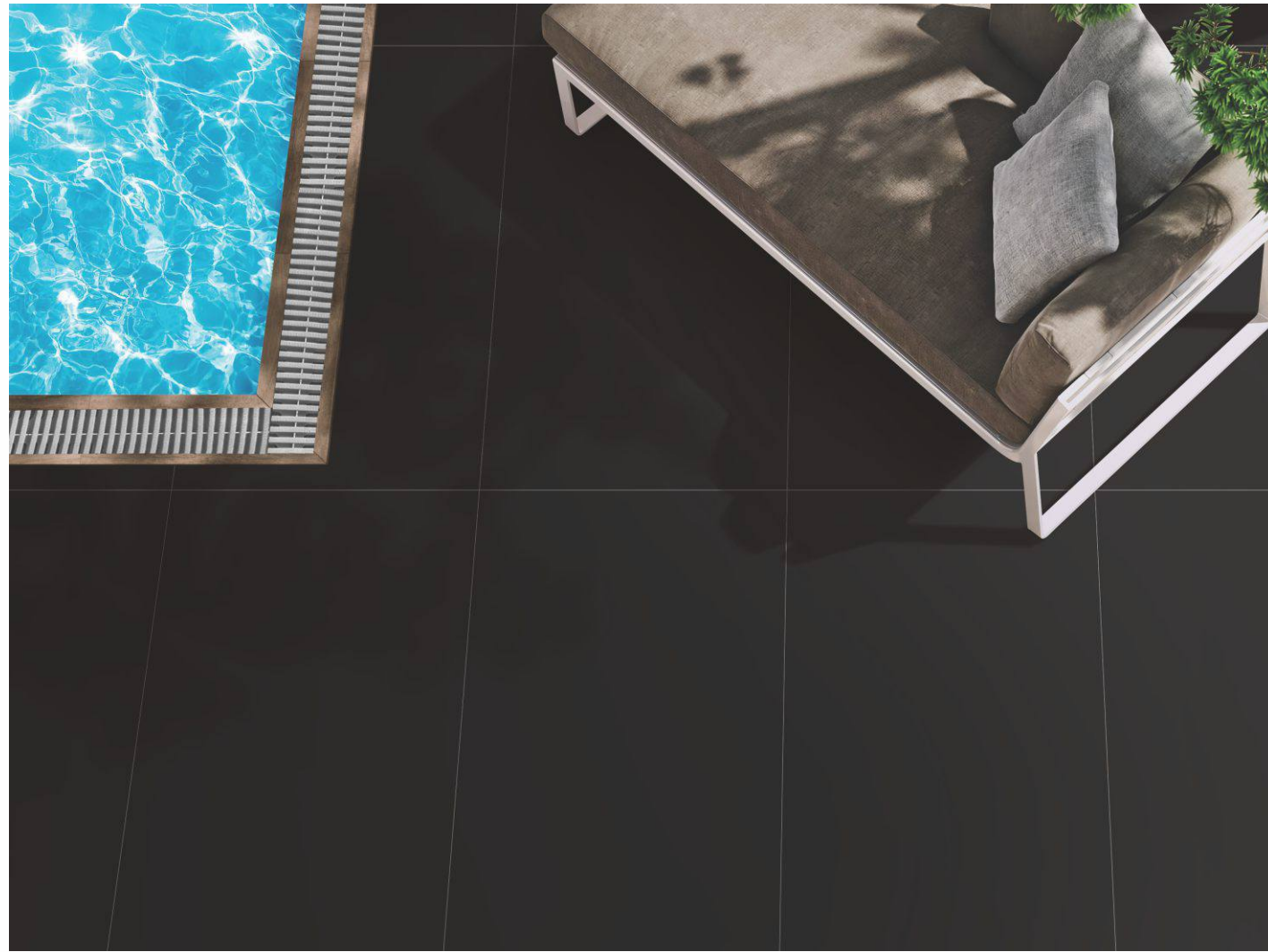
Put the tiles in place and tap down gently with a rubber hammer to drive out the air and ensure perfect bonding. Fit the 4/5 mm spacers into the joints.



Once the glue has dried, remove the spacers, grout the joints and clean thoroughly to remove any residues.



LAYING AS RAISED PAVING



SUGGESTED PROCESS



INSTALLATION SYSTEMS



Clean the existing surface and check that the screed is level to select the right type of pedestal. The screed must be dry and cured. Prepare the chosen pedestals, cutting the ones around the edge to size and removing any unwanted wings.



Arrange the grid of pedestals in accordance with the laying diagram, starting with those around the edge. Fit the protective tile edge clips on the pedestals against any walls.

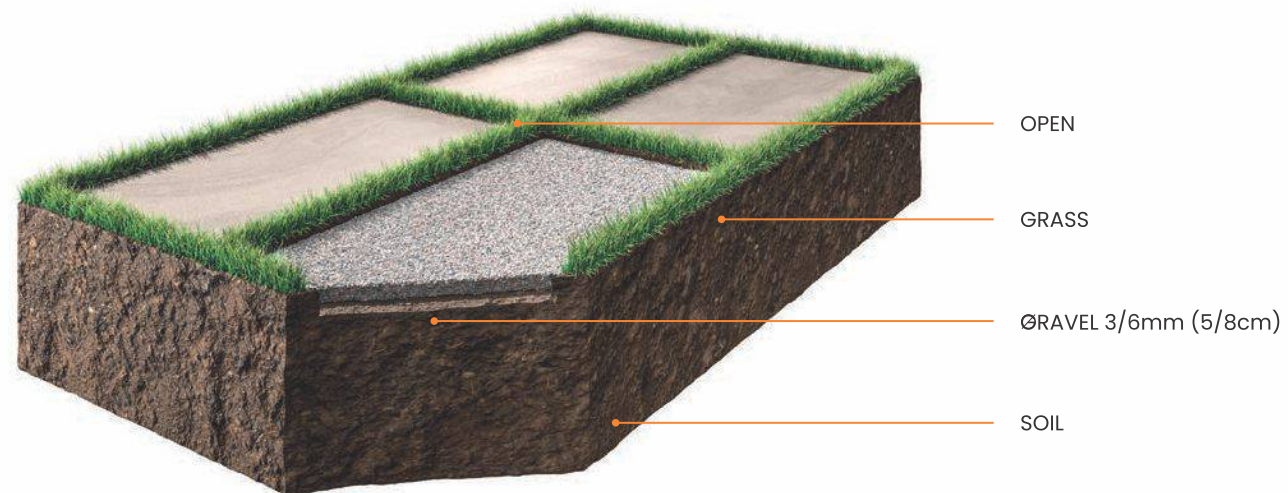


Lay the tiles on the pedestals dry. Add a pedestal in the middle of the tiles, removing the spacer wings. Systematically check the flatness and adjust the heights of the pedestals with the adjuster key to compensate for any unevenness in the substrate. A little slope of the substrate is always recommended in order to prevent water stagnation underneath the surface.

LAYING ON GRASS



SUGGESTED PROCESS



INSTALLATION SYSTEMS



Place the slabs dry on the grass and check that the gap between them is the same over the entire laying surface.



Mark out the area of turf to be removed and dig out to a depth of at least 5 cm. Create a layer of at least 3 cm of gravel (diam. 3/6 mm).

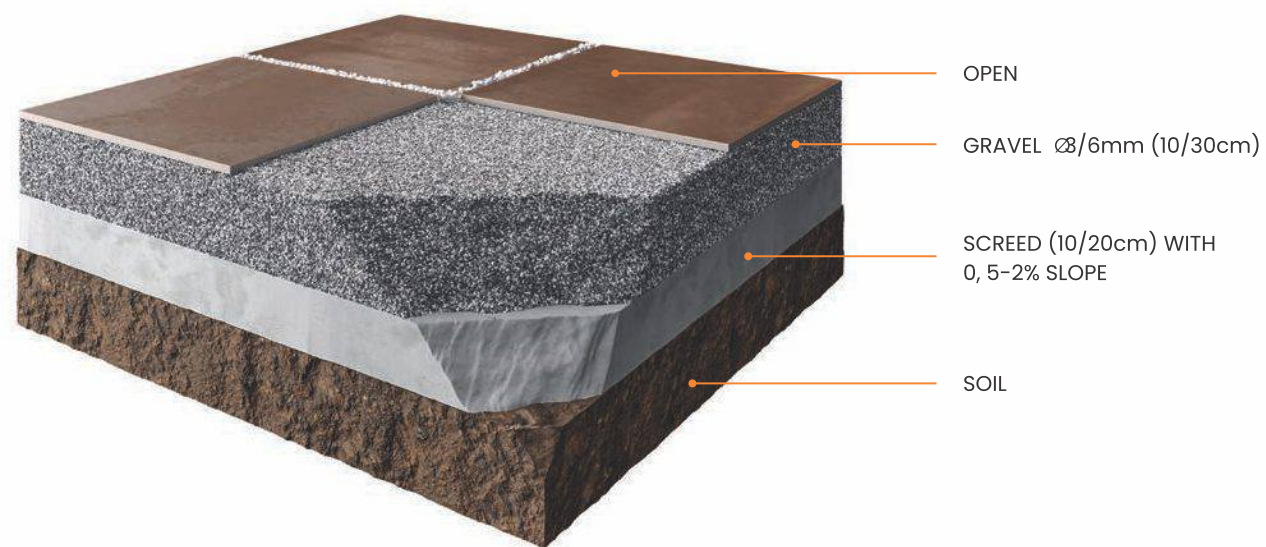


After checking that the substrate created is level, put the slabs in place and tap down gently with a rubber hammer to settle them into place and eliminate any unevenness.

LAYING ON GRAVEL



SUGGESTED PROCESS



INSTALLATION SYSTEMS



Create a layer of at least 5 cm of gravel (diam. 3/6 mm) on the existing substrate. Level the surface with a straightedge and check the flatness.

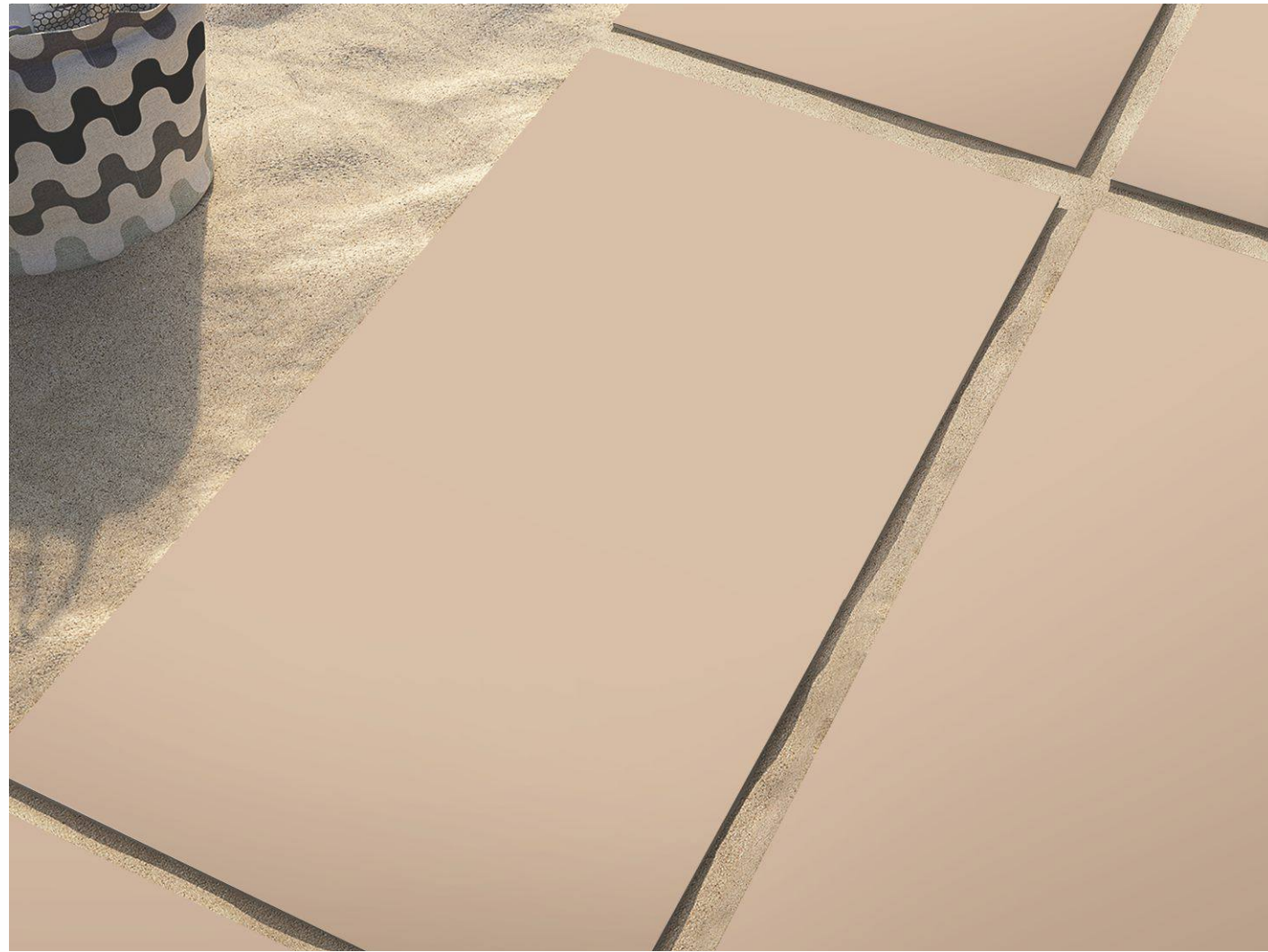


Place the slabs dry on the gravel and check that the gap between them is the same over the entire laying surface. Tap down gently with a rubber hammer to settle them into place and eliminate any unevenness.

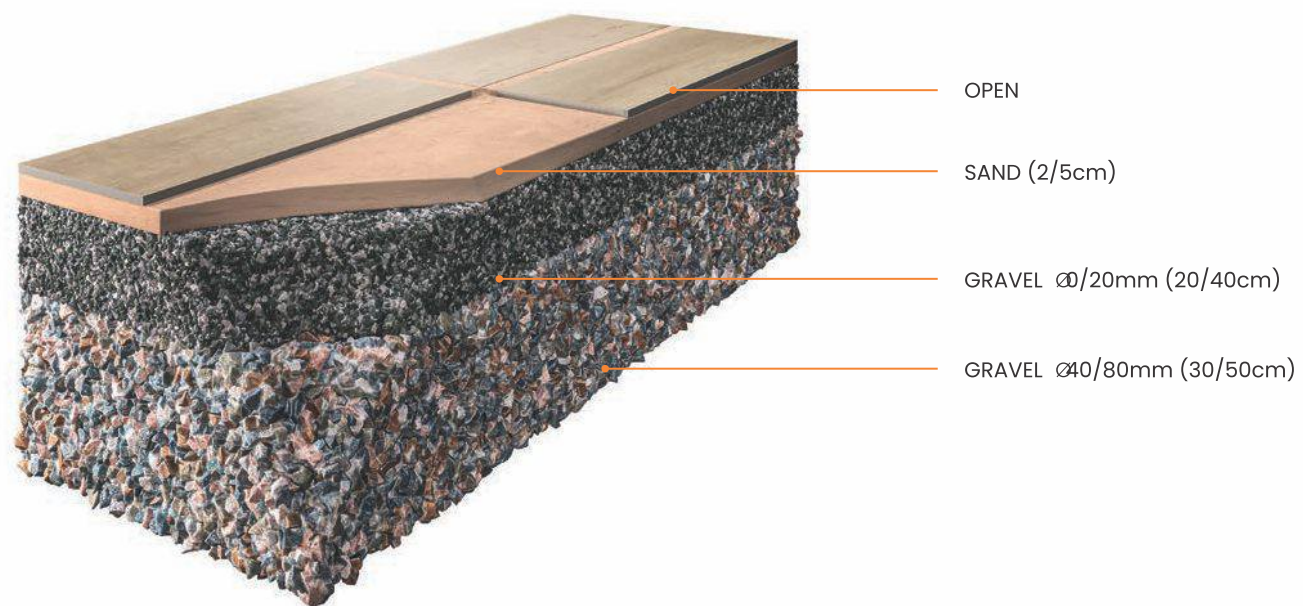


Check the flatness of the surface created. Add gravel in the joints to level the paving. Decorative gravel larger in diameter than the type use for the substrate can also be used in the joints.

LAYING ON SAND



SUGGESTED PROCESS



INSTALLATION SYSTEMS



Prepare a layer of sand at least 5 cm thick on the existing substrate (screed or gravel). Level the surface with a straightedge and check the flatness.



Place the slabs dry on the sand and check that the gap between them is the same over the entire laying surface. Tap down gently with a rubber hammer to settle them into place.



Add sand in the joints to level the paving. Clean the surface of the slabs.

OUR NAME STANDS FOR TECHNICAL AND AESTHETIC EXCELLENCE.



Around the world, we proudly promote materials that best express that Made in India aesthetic, style and technical excellence.

On the international market, our name is synonymous with Full body tiles technical porcelain stoneware that offers extremely high technical and aesthetic performance. We transform top quality raw materials into ceramic projects able to interpret the many requirements of a continuously evolving world.



Tiles of India is the certified brand of origin which exclusively marks all products fully manufactured in India representing the decades old values system of the Indian Ceramic Industry. We support all those values promoted by the Indian Ceramics code of ethics, from **100% Indian production to social and environmental responsibility.**



100% ISO 9001 : 2015 certification is internationally recognised and represents a guarantee of the excellence and quality of the management system. TILES decided of its own accord to undertake this important process, adopting a set of rules, responsibilities and checks to improve the efficiency of processes and customer satisfaction, to boost its competitiveness and maintain compliance with the highest quality standards.



SAFETY SYSTEM MANAGEMENT

The health and wellbeing of employees are crucial priorities for TILES. the attainment of ISO 45001 certification strengthens a business culture that sees safety not simply as a question of regulatory compliance, but as an essential part of working processes. Regulation is a necessary tool for generating a new model of sustainable competitiveness that can improve company performance across the board.

ECO-SUSTAINABLE DEVELOPMENT



ENVIRONMENTAL MANAGEMENT

TILES conforms with the environmental regulations envisaged by the ISO 14001 certification. This certification measures and controls the reduced environmental impact of production sites, through an environmental management system based on strict parameters.

Megan Tiles CONTRIBUTES TOWARDS ENERGY EFFICIENCY THROUGH:

- 100% recycling of waters used
- 100% recycling of unfired and fired waste
- 100% recycling of packaging and pallets
- 60% recycling of waste.

LOW ATMOSPHERIC GAS EMISSIONS

- 100% Water Consumption Savings
- 100% Recycling of Unfired Waste
- 100% Recycling of Fired Waste
- 100% Recycled Packaging
- 70% Recycling of Industrial Waste
- Noise Pollution Monitoring
- 100% Recycled Pallets



LOW ATMOSPHERIC GAS EMISSIONS



100% WATER CONSUMPTION SAVINGS



100% RECYCLING OF UNFIRED WASTE



100% RECYCLING FIRED WASTE



100% RECYCLED PACKAGING



90% RECYCLING OF INDUSTRIAL WASTE



NOISE POLLUTION MONITORING



100% RECYCLED PALLETS



IMC is a voluntary certification system, for the design, construction and management of high performance sustainable buildings; it promotes an integrated design system that concerns the whole building. It is developed by the U.S. INTERNATIONAL MANAGEMENT COUNCIL (USIMC), an association which provides a global approach to sustainability, providing recognition for virtuous performance levels in key areas of human and environmental health. The system is based on rating credits for each of the requisites featuring the sustainability of the building. The sum of the credits composes the certification level achieved.

TECHNICAL SPECIFICATION

TECHNICAL DETAILS	STANDARD AS PER ISO-13006/EN176 GROUP BIa	MEAN VALUE OF FULL BODY VITRIFIED TILES	METHOD OF TEST
Deviation In Length & Width	± 0.60%	± 0.10%	ISO-10545-2
Deviation In Thickness	± 5.00%	± 2.00%	ISO-10545-2
Straightness Of Sides	± 0.50%	± 0.10%	ISO-10545-2
Rectangularity	± 0.60%	± 0.10%	ISO-10545-2
Surface Flatness	± 0.50%	± 0.10%	ISO-10545-2
Glossiness	Gloss Meter	Min. 90%	Glossometer
Water Absorption	≤ 0.50%	E ≤ 0.05%	ISO-10545-3
Breaking Strength	1300 N	2000 N	ISO-10545-4
Abrasion Resistance	Max. 175mm	Max. 145mm ³	ISO-10545-6
Moh's Hardness	Min. 6	≤ 6*	EN101
Frost Resistance	Frost Proof	Frost Proof	ISO-10545-12
Thermal Shock	No Damage	No Damage	ISO-10545-9
Moisture Expansion	Nil	Nil	ISO-10545-10
Thermal Expansion	< 9 x 10 ⁻⁶	< 6 x 10 ⁻⁶	ISO-10545-8
Resistance of House Hold Chemical	No Damage	No Damage*	ISO-10545-13
Stain Resistance	Resistance	Resistance*	ISO-10545-14
Slip Resistance (Friction Co Efficient)	> 0.40	> 0.40	ISO-10545-17

PACKING DETAILS

Collection	Size	Pieces / Box	Whight / box (Approx)	Coverage Area / Box
Megan	600x600mm	2 Pieces	23.00kg	7.7 ft ² or 0.72 mtr ²

Disclaimer

Megan reserves the right to delete & amend either totally or partially, any of the colours, shapes, sizes, references and other technical specifications contained in this catalogue at anytime. The colours of tiles shown in this catalogue are purely illustrative to printing process. Please refer actual sample before final selection. The details of sizes, colours and references should be verified for typographical errors.

CLEANING & MAINTENANCE

TYPE OF STAIN	CHEMICAL PRODUCT	EXAMPLE
Grease	Alkaline - Solvent	Detergent
Oil	Solvent	Ammonia, Baking Soda
Ink	Oxidant - Solvent	Alcohol, Liquid Bleach, Nail Paint Remover
Rust	Acid	Hydrochloric Acid, Vinegar, Red Harpic
Lime	Acid	Descaling Reagent, Hydrochloric Acid
Cement	Acid	Hydrochloric Acid
Wine	Alkaline	Ammonia, Liquid Bleach
Coffee	Alkaline - Solvent	Ammonia, Liquid Bleach
Rubber	Solvent	Alcohol, Thinner
Plaster	Acid	Hydrochloric Acid
Candle Wax	Solvent	Alcohol, Thinner
Iodine	Oxidant	Liquid Bleach
Blood	Oxidant	Liquid Bleach
Ice Cream	Alkaline	Liquid Bleach

Our products are non porous (due to their high quality raw materials, stringent production parameters and state of the art technology), hence any dust or deposited waste cannot penetrate the surface. For most cases only a damp cloth is sufficient for cleaning. Regular cleaning highlights the aesthetic features of the surface and gives it exceptional shine. For highly aggressive cleaning caused by some common food and substances follow the table below.

MEGANTM

MEGAN CERA GLOBAL PVT LTD

307/308, Corporate Avenue, Bh. Crystal mall,
Kalawad Road, Rajkot, Gujarat, India-360005.

www.megancera.com | info@megancera.com